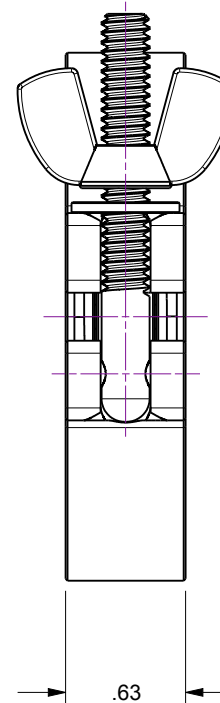
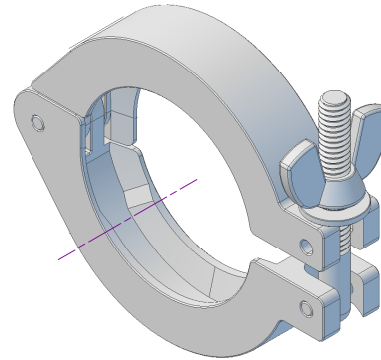
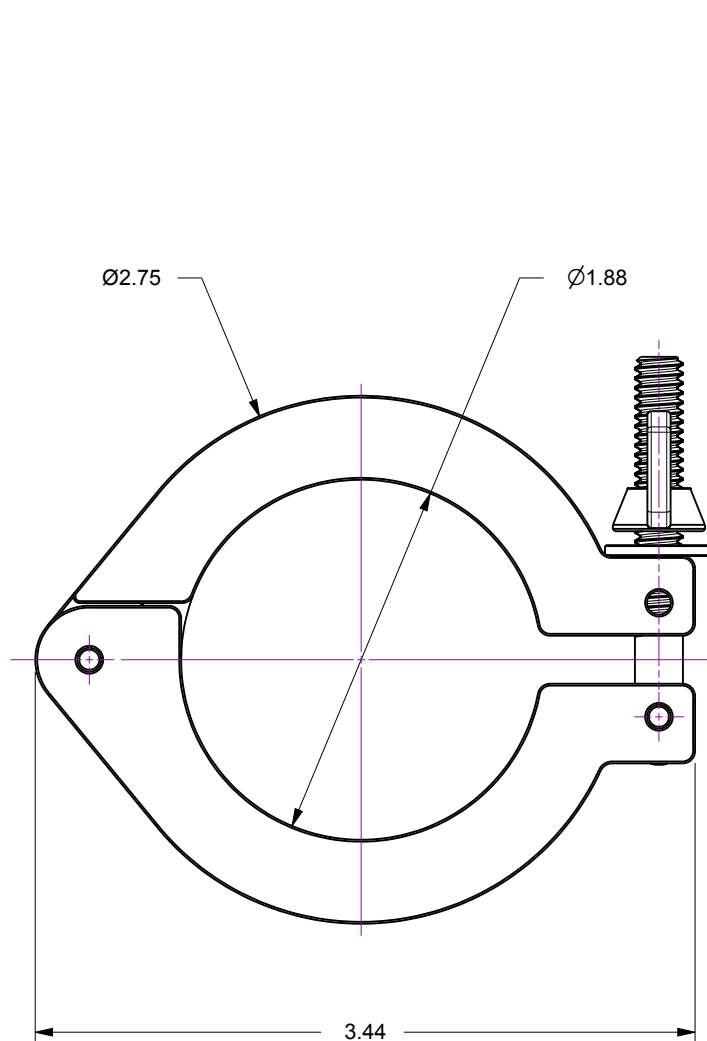


Notes

1. ISO NW40 KF Hinged Clamp for use with standard Quick-Release flanges
2. Includes stainless steel threaded stud, wingnut and washer

| Rev. | Description | Date | Made By | Approval |
|------|-----------------|------|---------|----------|
| A | Initial Release | | | |

**UNCONTROLLED WEB DRAWING**

Proprietary and Confidential
The information contained in this drawing is the sole property of Accu-Glass, Products Inc. Any reproduction, in part or as whole, without the written permission of Accu-Glass Products, Inc., is strictly prohibited.

Material

Aluminum, 6061

Tolerances,
unless otherwise specified

.X ± .030

.XX ± .010

.XXX ± .005

Angles ± 0.5°
Finish 63Ra

Title

HC-AL-K40

Drawn by
DateLigeti
1/22/2019No. **202225**

Rev.

A

Approved

Sheet



Accu-Glass Products Inc.
25047 Anza Drive
Valencia, CA 91355
T 818-365-4215
F 818-365-7074
www.accuglassproducts.com