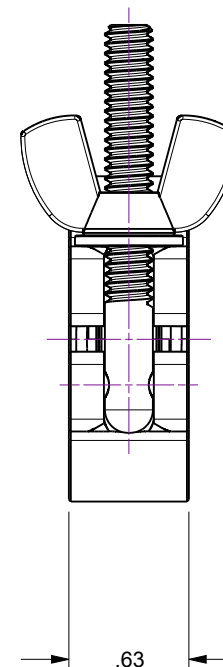
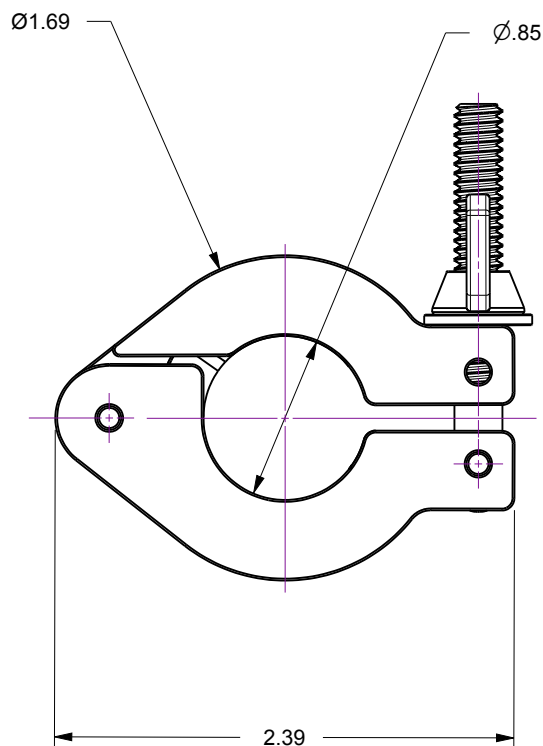
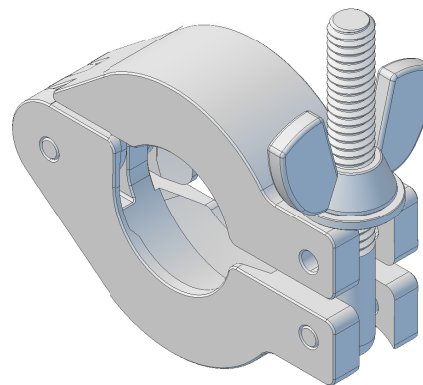


## Notes

1. ISO NW16 KF Hinged Clamp for use with standard Quick-Release flanges
2. Includes stainless steel threaded stud, wingnut and washer

Rev.	Description	Date	Made By	Approval
A	Initial Release			

**UNCONTROLLED WEB DRAWING**

Proprietary and Confidential  
The information contained in this drawing is the sole property of Accu-Glass, Products Inc. Any reproduction, in part or as whole, without the written permission of Accu-Glass Products, Inc., is strictly prohibited.

## Material

Aluminum, 6061

Tolerances,  
unless otherwise specified

.X ± .030

.XX ± .010

.XXX ± .005

Angles ± 0.5°  
Finish 63Ra

## Title

HC-AL-K16

Drawn by  
DateLigeti  
1/22/2019No. **202205**

Rev.

**A**

Approved

Sheet



**Accu-Glass Products Inc.**  
25047 Anza Drive  
Valencia, CA 91355  
T 818-365-4215  
F 818-365-7074  
www.accuglassproducts.com