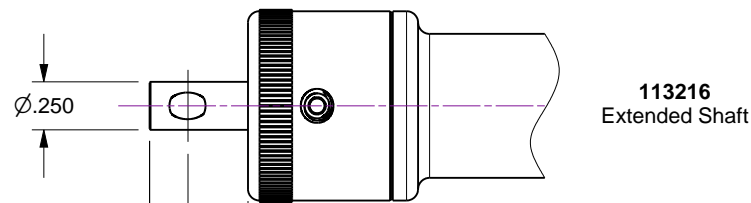


Notes

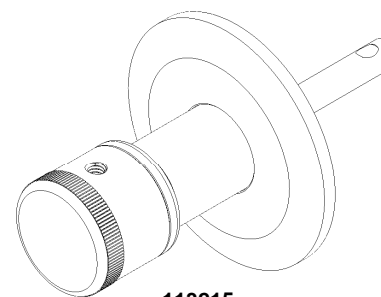
ORR Rotary Feedthrough / Elastomer Sealed Shaft

1. ORR series 'elastomer sealed' rotary motion feedthrough are an economical alternative to bellows sealed devices, and ideally suited for less critical applications in the high vacuum regime. They are constructed of black-anodized aluminum and stainless steel.
2. In-vacuum bearings are dry-film lubricated with tungsten-disulfide, while air side bearings are lubricated with a high-temperature Krytox® lubricant.
3. Rotation shaft is sealed with a Viton® elastomer O-ring located at end opposite vacuum mounting flange.
4. Feedthroughs are fitted with a manual actuator, and are also available with an air-side shaft extension for added drive flexibility.
5. Leak tested to 5x10E-10 Standard cc/sec of He
6. Custom solutions available on request

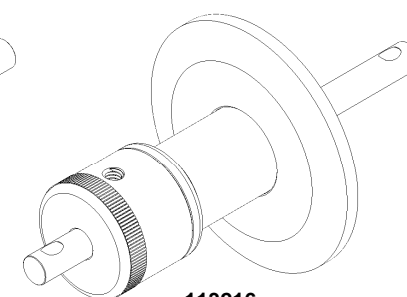
Rev	Description	Date
A	Initial Release	04/19/2018



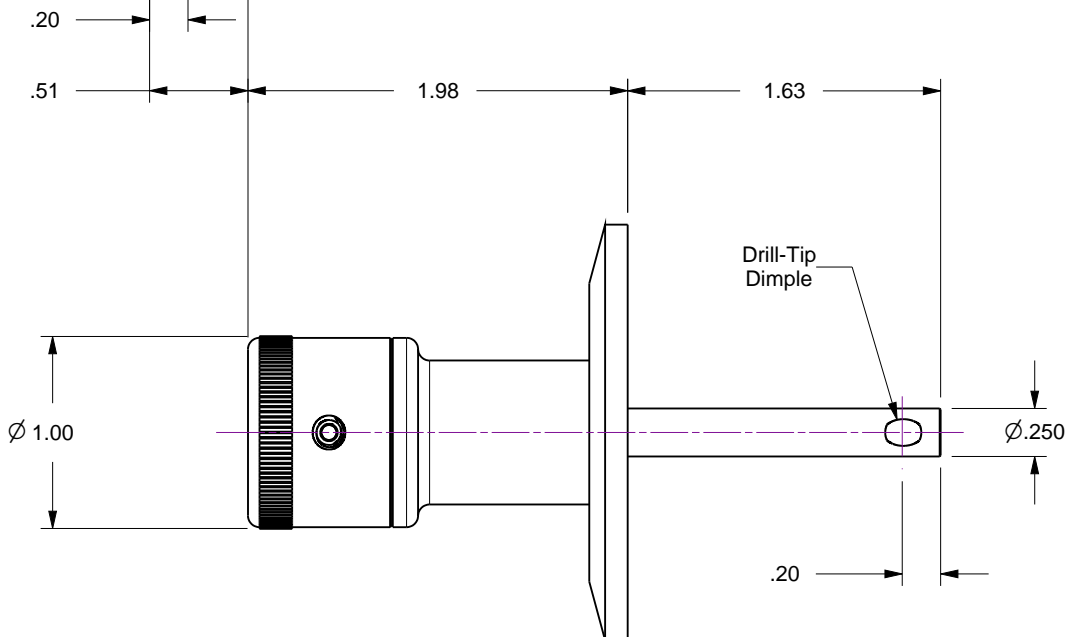
113216
Extended Shaft



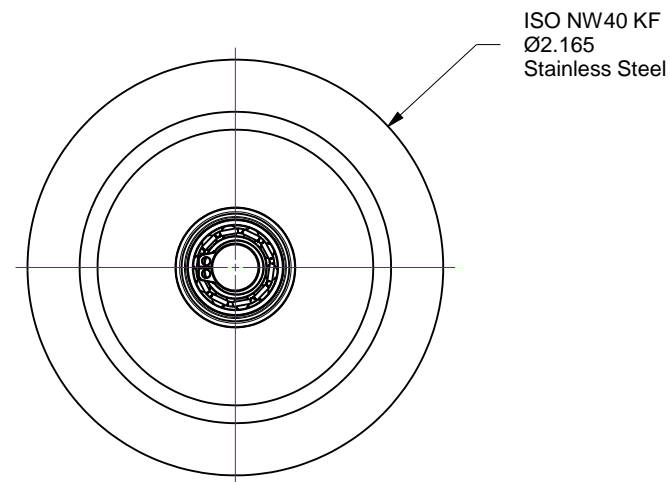
113215
Standard



113216
Extended Shaft



113215
Standard



Accu-Glass Products Inc.
25047 Anza Drive
Valencia, CA 91355
T 818-365-4215
F 818-365-7074
www.accuglassproducts.com

UNCONTROLLED WEB DRAWING

Proprietary and Confidential
The information contained in this drawing is the sole property of Accu-Glass, Products Inc. Any reproduction, in part or as whole, without the written permission of Accu-Glass Products, Inc., is strictly prohibited.

Material

Material

Tolerances,
unless otherwise specified

.X ± .030

.XX ± .010

.XXX ± .005

Angles ± 0.5°
Finish 63Ra

Title

Rotary Feedthrough, Manual / Elastomer Sealed / ISO NW40 KF

Drawn by
Date

Ligeti
04/19/2018

No. **113215 and 113216**

Rev.
A

Approved

Sheet