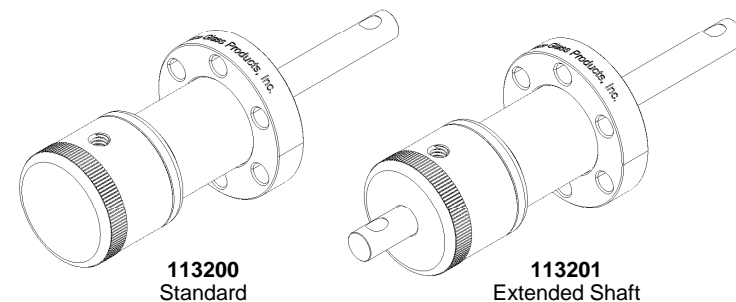


Notes

ORR Rotary Feedthrough / Elastomer Sealed Shaft

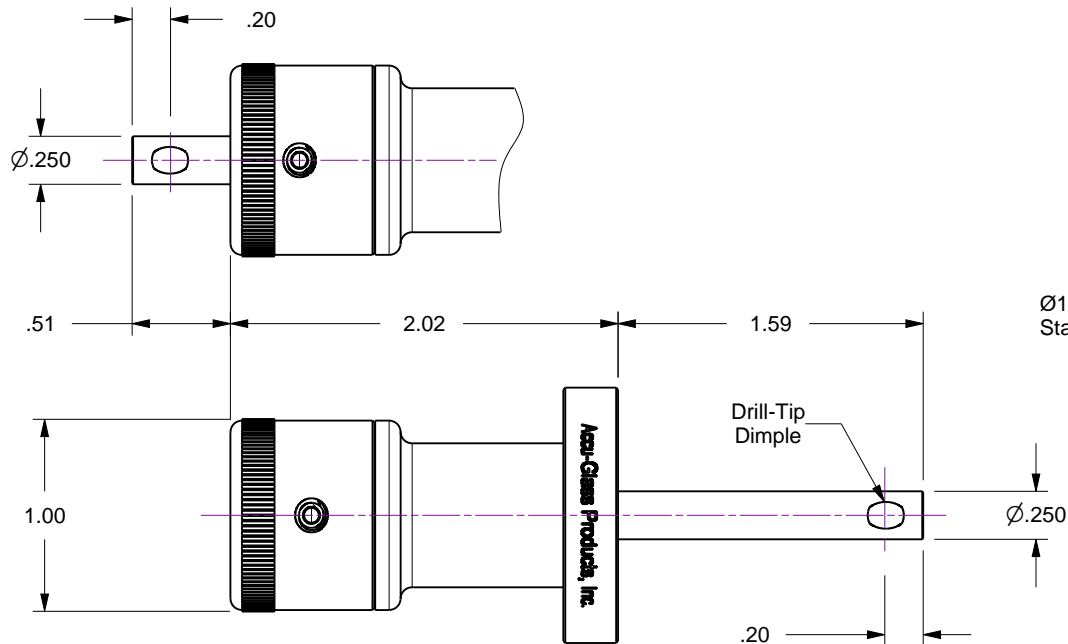
1. ORR series 'elastomer sealed' rotary motion feedthrough are an economical alternative to bellows sealed devices, and ideally suited for less critical applications in the high vacuum regime. They are constructed of black-anodized aluminum and stainless steel.
2. In-vacuum bearings are dry-film lubricated with tungsten-disulfide, while air side bearings are lubricated with a high-temperature Krytox® lubricant.
3. Rotation shaft is sealed with a Viton® elastomer O-ring located at end opposite vacuum mounting flange.
4. Feedthroughs are fitted with a manual actuator, and are also available with an air-side shaft extension for added drive flexibility.
5. Leak tested to 5x10E-10 Standard cc/sec of He
6. Custom solutions available on request

Rev	Description	Date
A	Initial Release	04/18/2018



113201
Extended Shaft

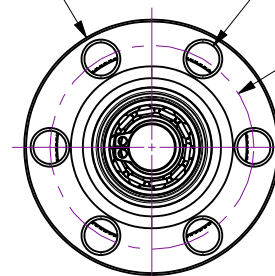
113200
Standard



Ø1.330 CF Flange
Stainless Steel

6x
Ø.172
Clearance Holes

Ø1.062 BC



UNCONTROLLED WEB DRAWING

Proprietary and Confidential
The information contained in this drawing is the sole property of Accu-Glass, Products Inc. Any reproduction, in part or as whole, without the written permission of Accu-Glass Products, Inc., is strictly prohibited.

Material
See Individual Components

Tolerances,
unless otherwise specified

.X ± .030
.XX ± .010
.XXX ± .005

Angles ± 0.5°
Finish 63Ra

Title

Rotary Feedthrough, Manual / Elastomer Sealed / 1.33 CF

Drawn by	Ligeti	No.	Rev.
Date	04/19/2018	113200 and 113201	A
Sheet			



Accu-Glass Products Inc.
25047 Anza Drive
Valencia, CA 91355
T 818-365-4215
F 818-365-7074
www.accuglassproducts.com