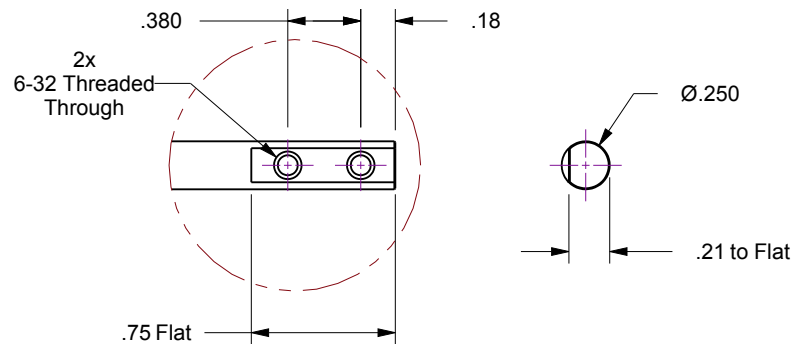
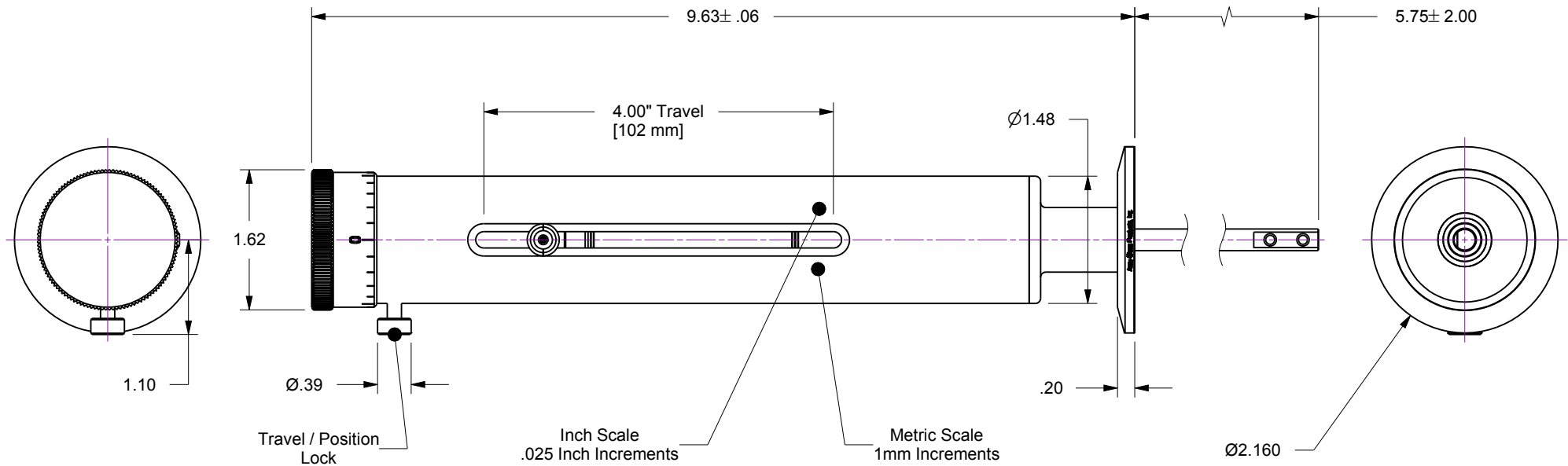
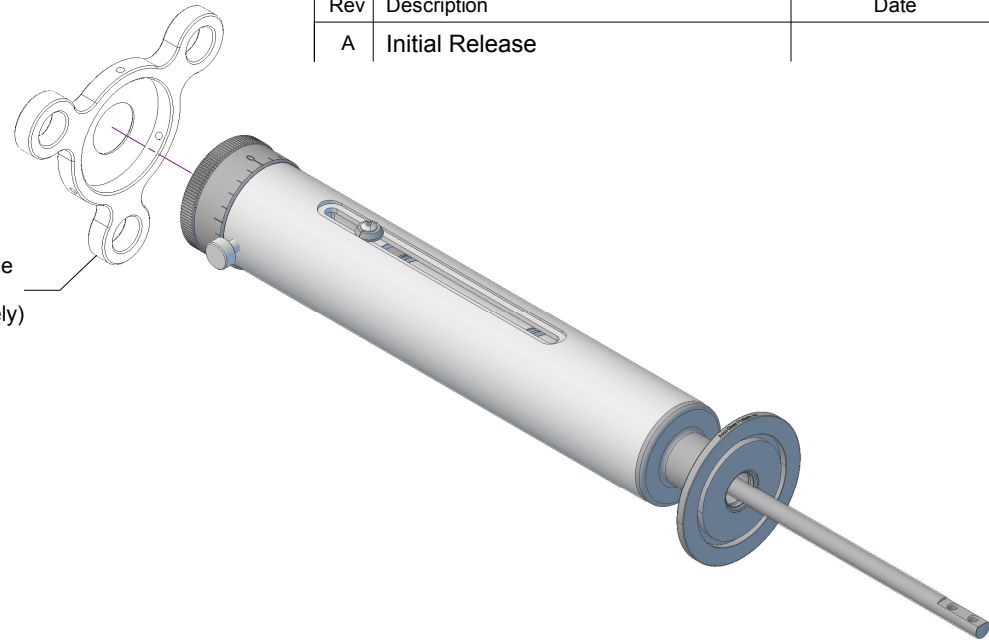


Notes

1. Leak test to 5x10E-10 Standard cc/sec of He
2. Environmental rating is limited to that of ISO NW flange... 1x10E-8 Torr, and 150 C
3. Axial load is 5 lb maximum... Lateral (moment) load is 5 lb at 2 inch from flange face.
4. Linear / Roary scale resolutions are .025 / .001 Inch respectively



Speed-Handle
113086
(sold separately)



Accu-Glass Products Inc.
25047 Anza Drive
Valencia, CA 91355
T 818-365-4215
F 818-365-7074
www.accuglassproducts.com

UNCONTROLLED WEB DRAWING

Proprietary and Confidential
The information contained in this drawing is the sole property of Accu-Glass, Products Inc. Any reproduction, in part or as whole, without the written permission of Accu-Glass Products, Inc., is strictly prohibited.

Material
See Individual Components

Tolerances,
unless otherwise specified

.X ± .030	Angles ± 0.5° Finish 63Ra
.XX ± .010	
.XXX ± .005	

Title

Linear Motion FT, 4.0" Manual on ISO NW40 KF

Drawn by
Date

Ligeti
9/9/2015

No. **113081**

Rev.

A

Approved

Sheet