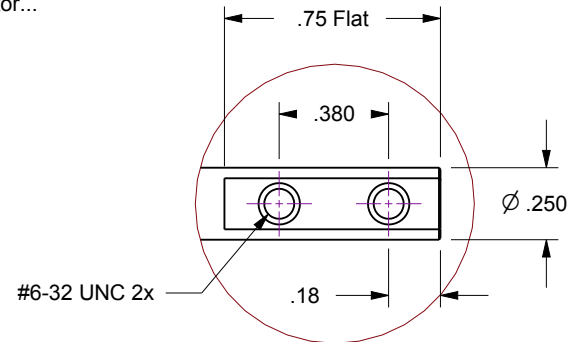


Notes

1. HTL-K40-4 / 4-Inch linear travel feedthrough with Option-21, AC Geared Motor...
2. 126 oz-in torque, 10 RPM output
3. Leak test to 5x10E-10 Standard cc/sec of He.
4. Protect flange O-ring seal surface from damage.

Rev.	Description	Date	Made By	Approval
B	Remodeled	3/12/2019	AL	



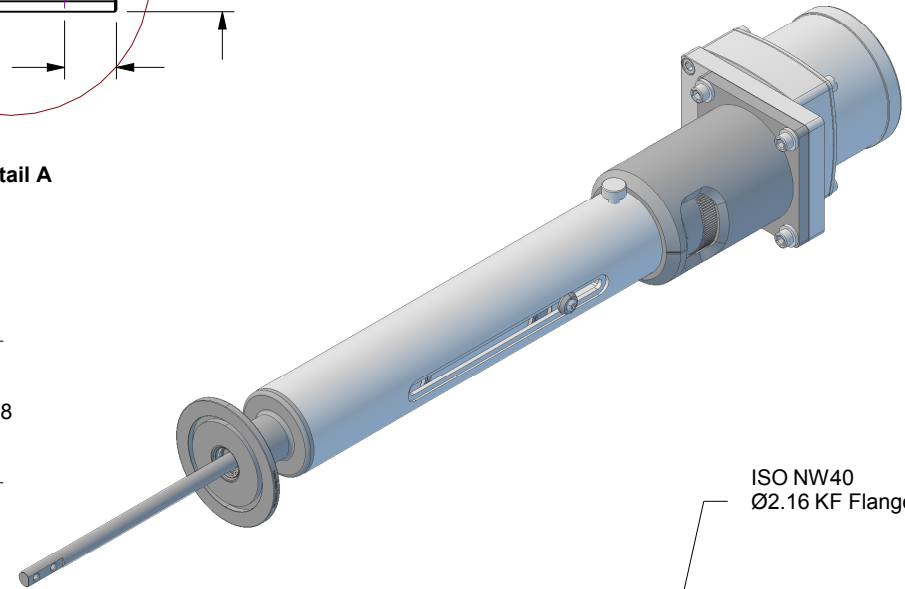
Detail A

4x 22AWG
Motor Leads

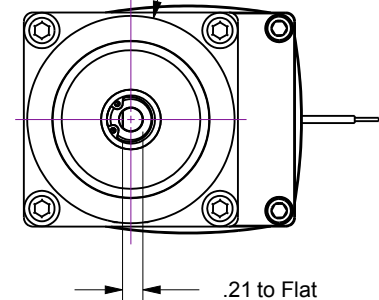
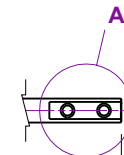
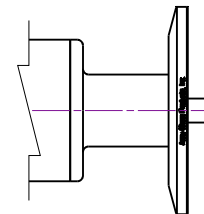
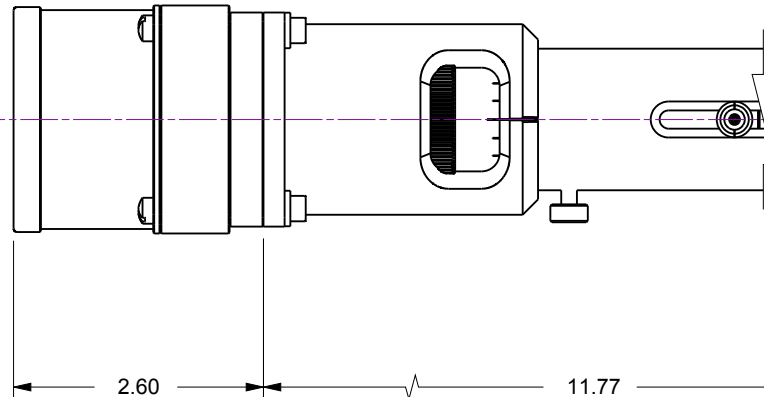
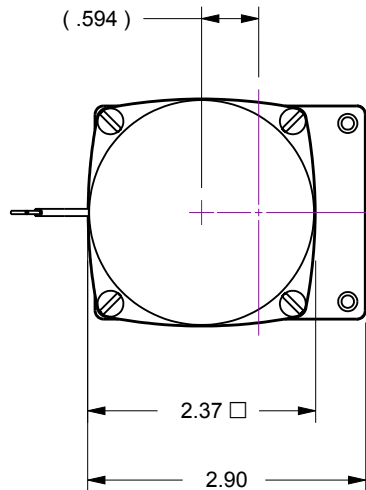
9.0

Ø1.99

Ø 1.48

ISO NW40
Ø2.16 KF Flange

(.594)



.21 to Flat

3.60 ~ 7.60

UNCONTROLLED WEB DRAWING

Proprietary and Confidential
The information contained in this drawing is the sole property of Accu-Glass, Products Inc. Any reproduction, in part or as whole, without the written permission of Accu-Glass Products, Inc., is strictly prohibited.

Material
See Individual ComponentsTolerances,
unless otherwise specified

.X ± .030

.XX ± .010

.XXX ± .005

Angles ± 0.5°
Finish 63Ra

Title

HTL-K40-4-21

Drawn by
DateLigeti
3/12/2019

No.

113081.21

Rev.

B

Approved

Sheet

Sheet



Accu-Glass Products Inc.
25047 Anza Drive
Valencia, CA 91355
T 818-365-4215
F 818-365-7074
www.accuglassproducts.com