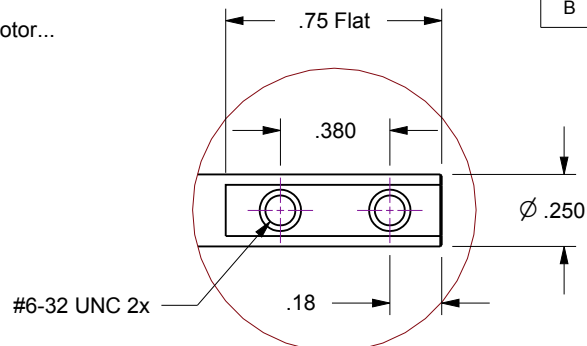


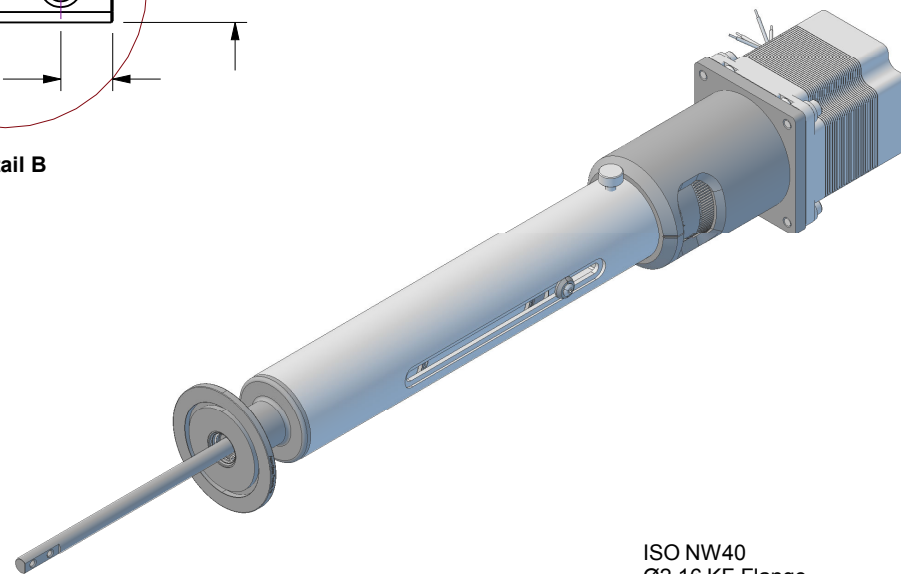
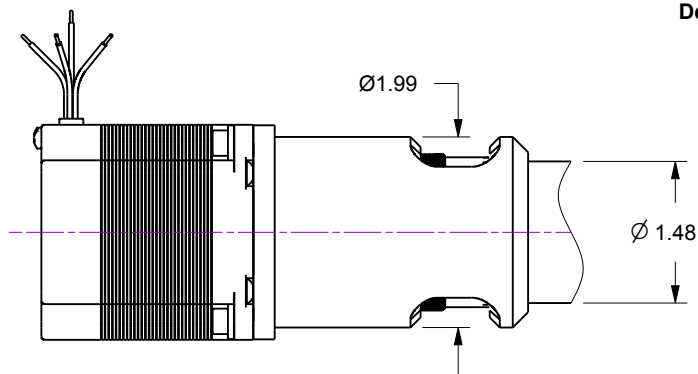
## Notes

1. HTL-K40-4 / 4-Inch linear travel feedthrough with Option-12, DC Stepper Motor...  
170 oz-in hi-torque, 200 full-step resolution.
2. Leak test to 5x10E-10 Standard cc/sec of He.
3. Protect flange O-ring seal surface from damage.

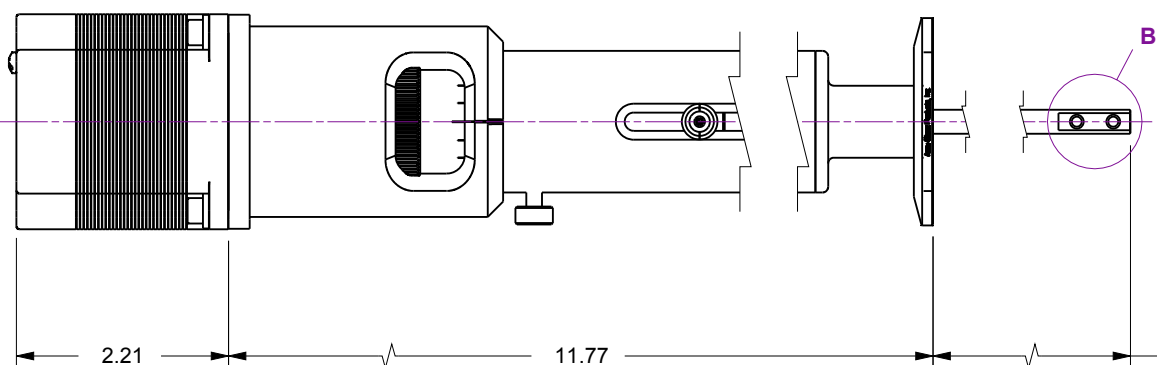
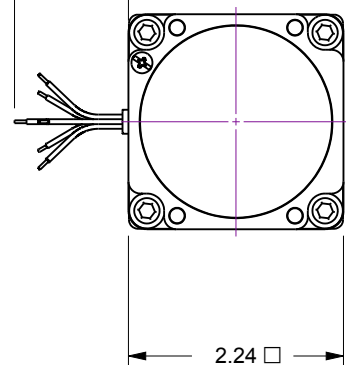
Rev.	Description	Date	Made By	Approval
B	Remodeled	3/12/2019	AL	



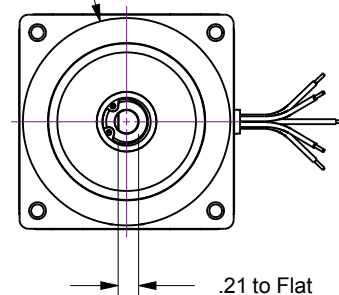
Detail B



6x 22AWG  
Motor Leads  
12.0



ISO NW40  
Ø2.16 KF Flange



## UNCONTROLLED WEB DRAWING

Proprietary and Confidential  
The information contained in this drawing is the sole property of Accu-Glass, Products Inc. Any reproduction, in part or as whole, without the written permission of Accu-Glass Products, Inc., is strictly prohibited.

Material  
See Individual Components

Tolerances,  
unless otherwise specified

.X ± .030  
.XX ± .010  
.XXX ± .005

Angles ± 0.5°  
Finish 63Ra

Title

HTL-K40-4-12

Drawn by  
Date

Ligeti  
3/12/2019

No.

113081.12

Rev.

B

Approved

Sheet



**Accu-Glass Products Inc.**  
25047 Anza Drive  
Valencia, CA 91355  
T 818-365-4215  
F 818-365-7074  
www.accuglassproducts.com