

1

2

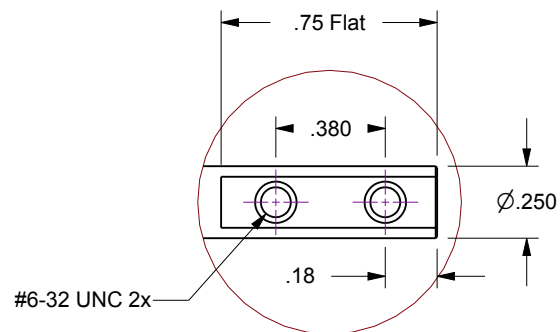
3

4

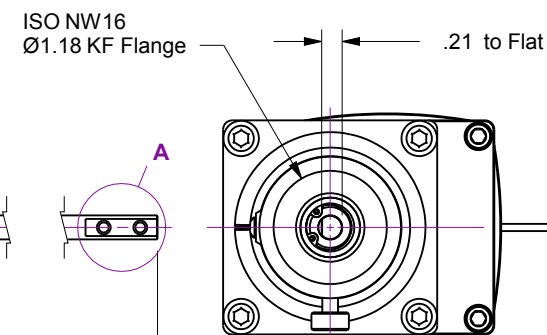
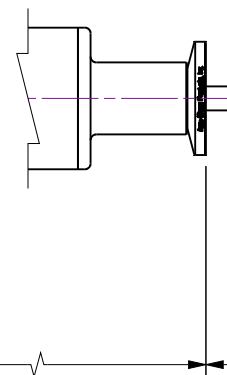
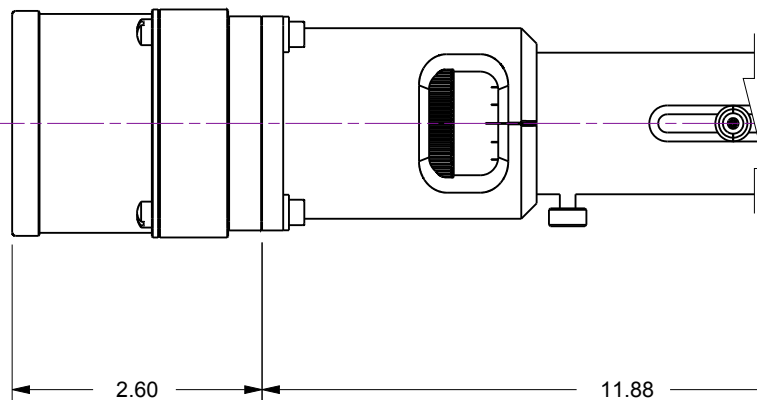
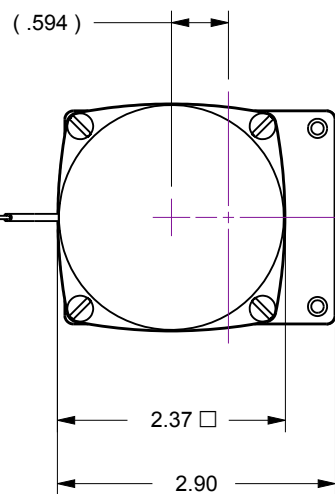
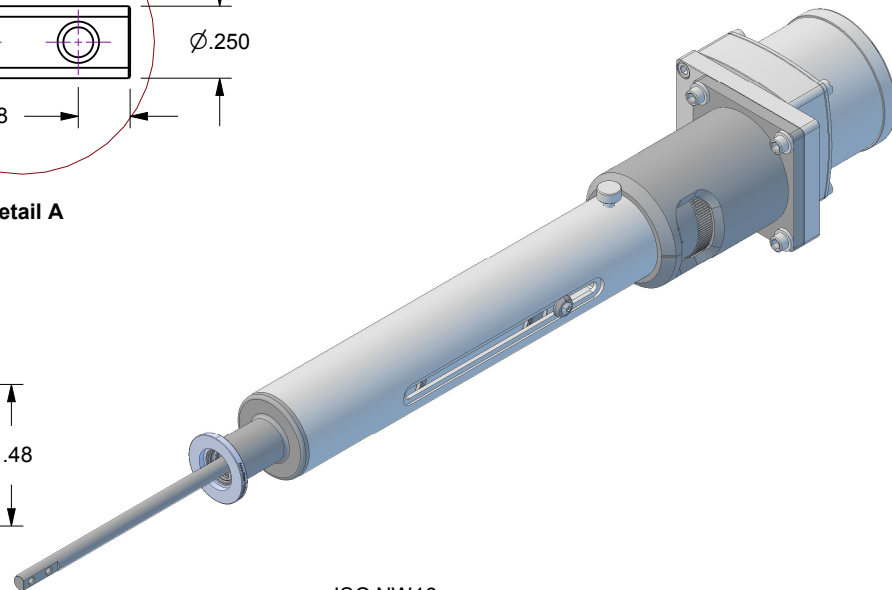
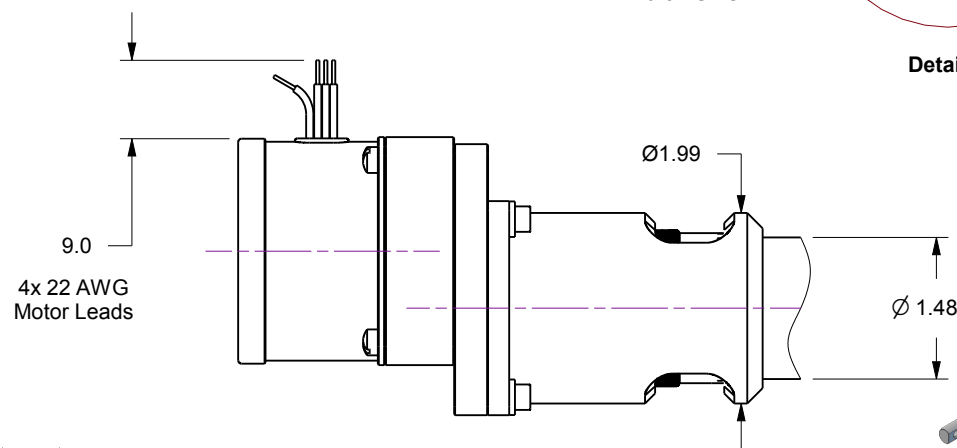
Notes

1. HTL-K16-4 / 4-Inch linear travel feedthrough with Option-21, 126 oz-in torque geared 10-RPM AC motor
2. Leak test to 5x10E-10 Standard cc/sec of He.
3. Protect flange O-ring seal surface from damage

Rev.	Description	Date	Made By	Approval
B	Remodeled	3/7/2019	AL	



Detail A



UNCONTROLLED WEB DRAWING

Proprietary and Confidential
The information contained in this drawing is the sole property of Accu-Glass, Products Inc. Any reproduction, in part or as whole, without the written permission of Accu-Glass Products, Inc., is strictly prohibited.

Material
See Individual Components

Tolerances,
unless otherwise specified

.X ± .030
.XX ± .010
.XXX ± .005

Angles ± 0.5°
Finish 63Ra

Title

HTL-K16-4-21

Drawn by
DateLigeti
3/7/2019

No.

113080.21

Rev.

B

Approved

Sheet



Accu-Glass Products Inc.
25047 Anza Drive
Valencia, CA 91355
T 818-365-4215
F 818-365-7074
www.accuglassproducts.com