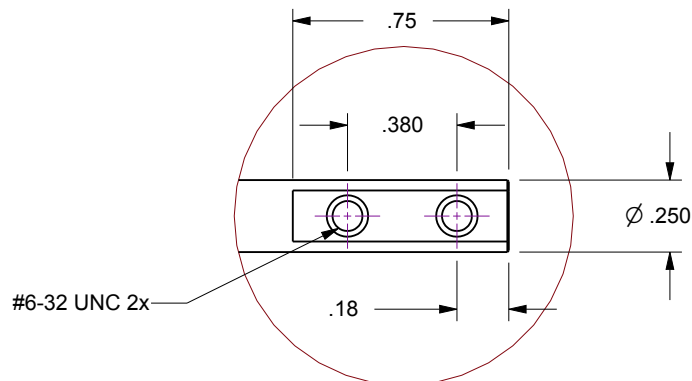


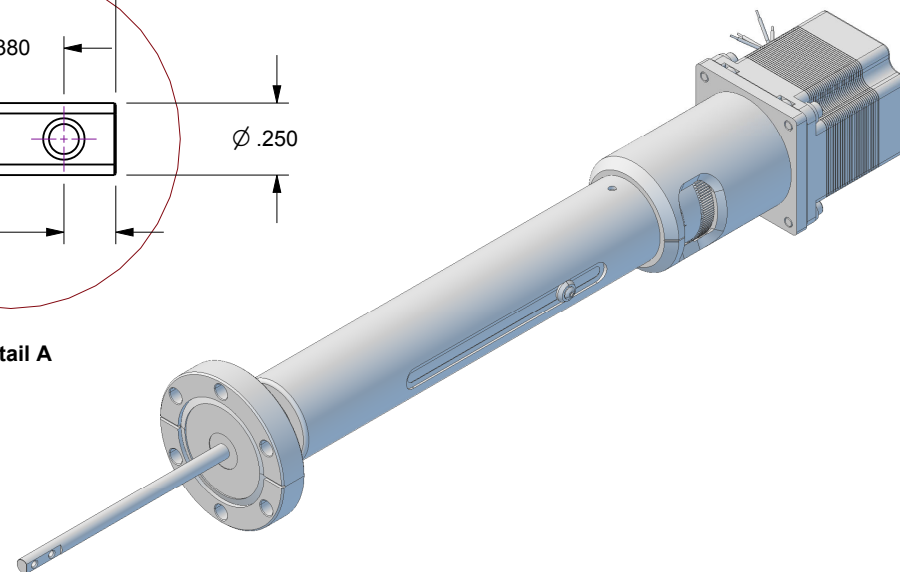
Notes

1. HTL-275-4 Four-inch linear travel feedthrough with Option-12, 170 oz-in torque DC Stepper motor, 200 full-step resolution
2. Leak test to 5x10E-10 Standard cc/sec of He
3. Protect flange seal surface (knife-edge) from damage

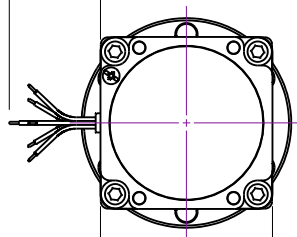
Rev.	Description	Date	Made By	Approval
A	Initial Release			



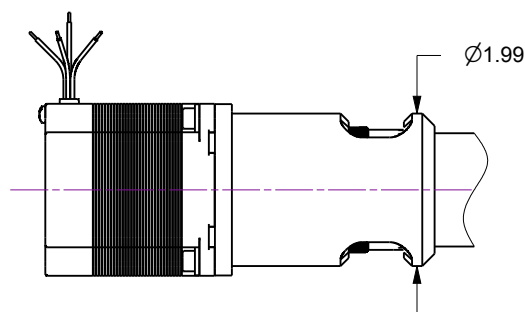
Detail A

6x 22AWG
Motor Leads

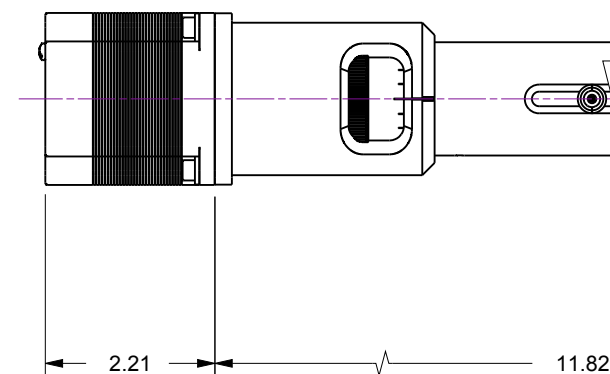
12.0



2.24 □

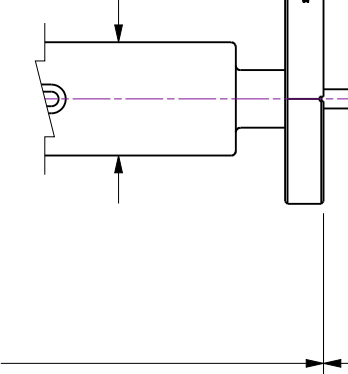


Ø1.99

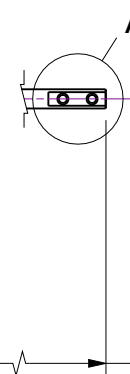


2.21

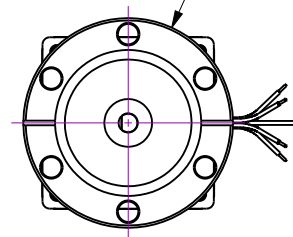
Ø1.48



11.82



3.55 ~ 7.55

CF Flange
Ø2.73

Accu-Glass Products Inc.
25047 Anza Drive
Valencia, CA 91355
T 818-365-4215
F 818-365-7074
www.accuglassproducts.com

UNCONTROLLED WEB DRAWING

Proprietary and Confidential
The information contained in this drawing is the sole property of Accu-Glass, Products Inc. Any reproduction, in part or as whole, without the written permission of Accu-Glass Products, Inc., is strictly prohibited.

Material
See Individual Components

Tolerances,
unless otherwise specified

.X ± .030
.XX ± .010
.XXX ± .005

Angles ± 0.5°
Finish 63Ra

Title

HTL-275-4-12

Drawn by
DateLigeti
3/6/2019

No.

113079.12

Rev.

NA

Approved

Sheet