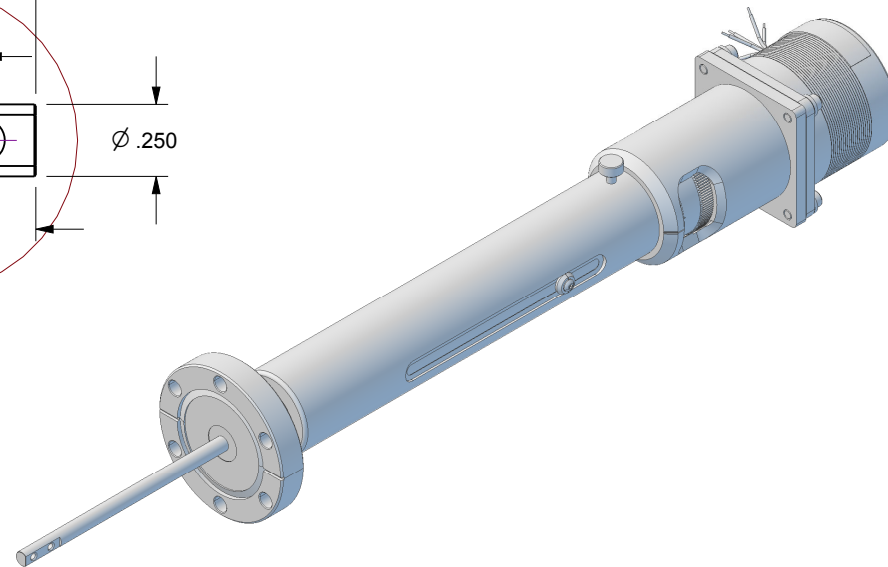
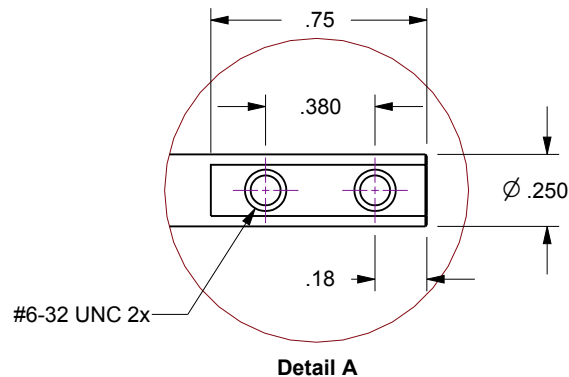


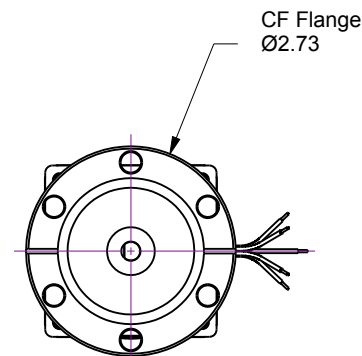
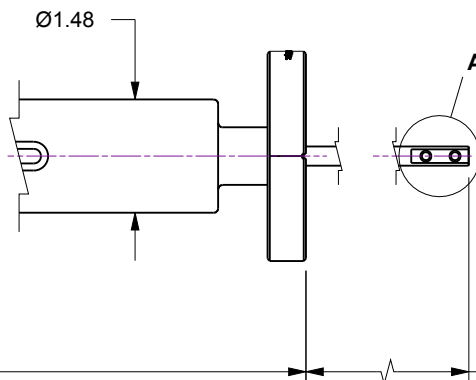
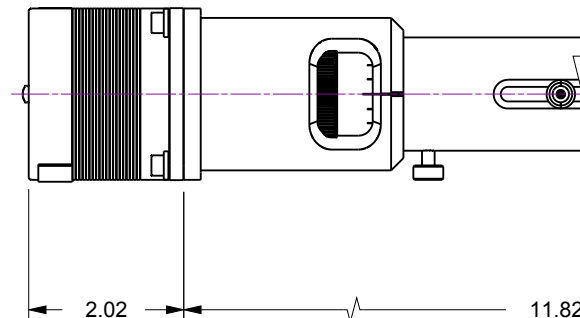
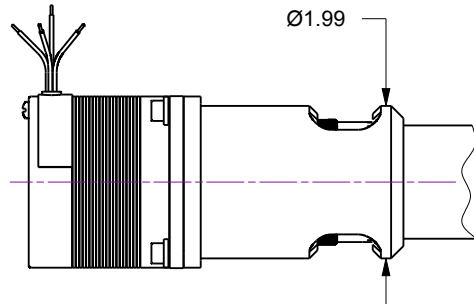
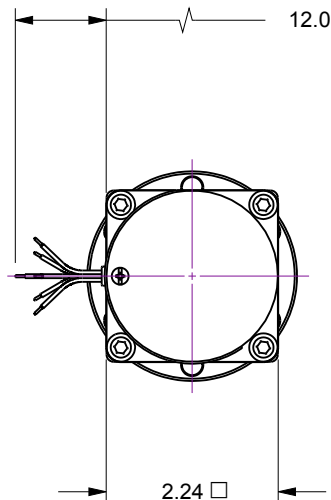
## Notes

1. HTL-275-4 Four-inch linear travel feedthrough with Option-11, 75 oz-in torque DC Stepper motor, 200 full-step resolution
2. Leak test to 5x10E-10 Standard cc/sec of He
3. Protect flange seal surface (knife-edge) from damage

Rev.	Description	Date	Made By	Approval
A	Initial Release			



6 x 22AWG  
Motor Leads



# UNCONTROLLED WEB DRAWING

Proprietary and Confidential  
The information contained in this drawing is the sole property of Accu-Glass, Products Inc. Any reproduction, in part or as whole, without the written permission of Accu-Glass Products, Inc., is strictly prohibited.

Material  
See Individual Components

Tolerances,  
unless otherwise specified

.X ± .030  
.XX ± .010  
.XXX ± .005

Angles ± 0.5°  
Finish 63Ra

Title

HTL-275-4-11

Drawn by  
Date

Ligeti  
3/6/2019

No. **113079.11**

Rev.  
**NA**

Approved

Sheet



**Accu-Glass Products Inc.**  
25047 Anza Drive  
Valencia, CA 91355  
T 818-365-4215  
F 818-365-7074  
www.accuglassproducts.com