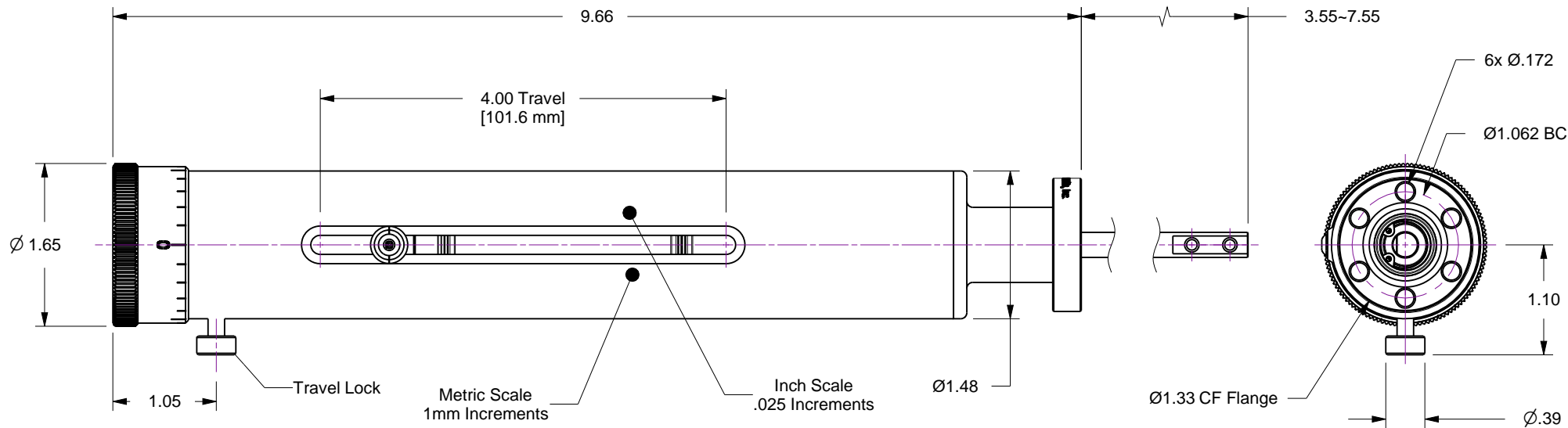
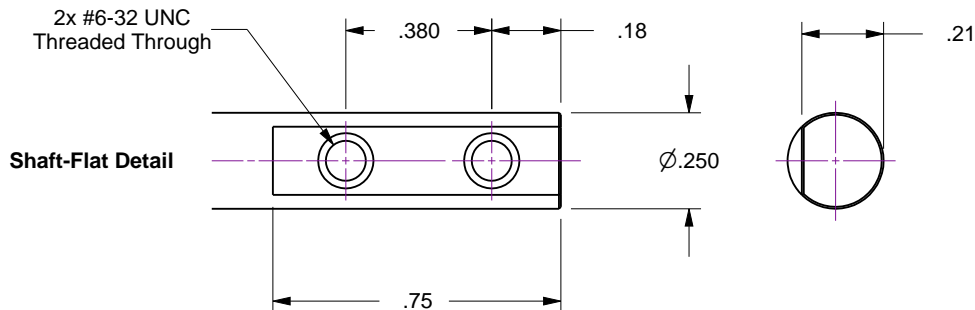
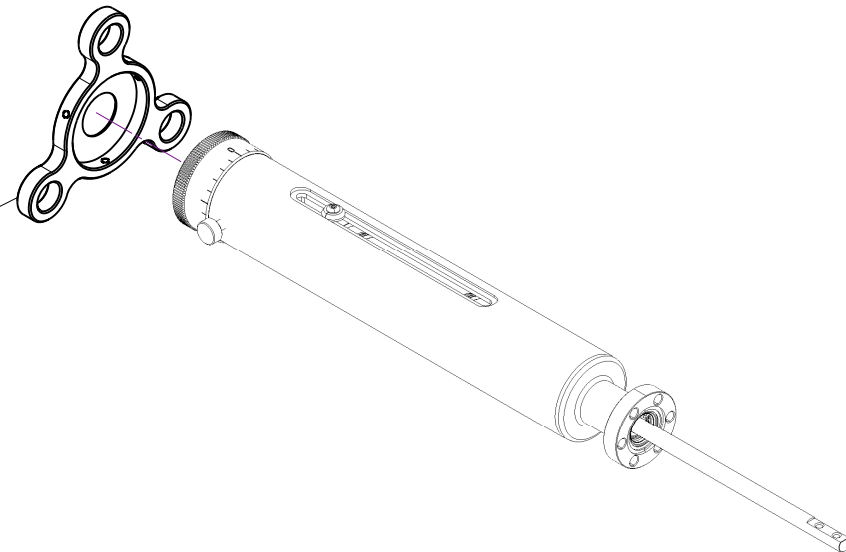


Notes

1. Manual, 4-Inch Linear Travel UHV (welded bellows) Feedthrough on 1.33 CF Flange / Model No. HTL-133-4
2. Speed Handle part No. 113086 (sold separately) provides faster manual travel/actuation.
3. Maximum Load : 5 lb Axial / 5 lb Lateral @ 2 Inches (50mm) from flange seal-face
4. Linear / Rotary scale resolutions are .025 / .001 Inch respectively
5. Leak test to 5x10E-10 Standard cc/sec of He.

Rev.	Description	Date	Made By	Approval
A	Initial Release			

Speed Handle
113086

Accu-Glass Products Inc.
25047 Anza Drive
Valencia, CA 91355
T 818-365-4215
F 818-365-7074
www.accuglassproducts.com

UNCONTROLLED WEB DRAWING

Proprietary and Confidential
The information contained in this drawing is the sole property of Accu-Glass, Products Inc. Any reproduction, in part or as whole, without the written permission of Accu-Glass Products, Inc., is strictly prohibited.

Material
See Individual Components

Tolerances,
unless otherwise specified

.X ± .030	Angles ± 0.5° Finish 63Ra
.XX ± .010	
.XXX ± .005	

Title

Linear Motion FT, 4.0" Manual on 1.33 CF

Drawn by
Date

Ligeti
9/3/2015

No. **113078**

Rev.

-

Approved

Sheet