

1

2

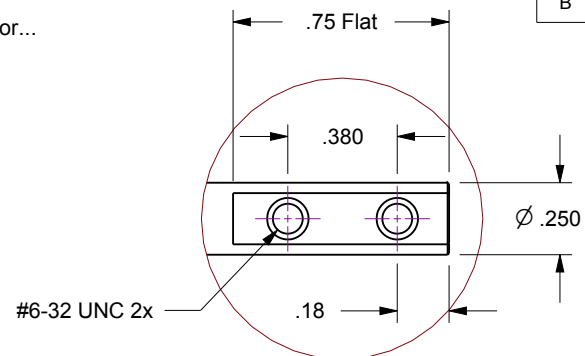
3

4

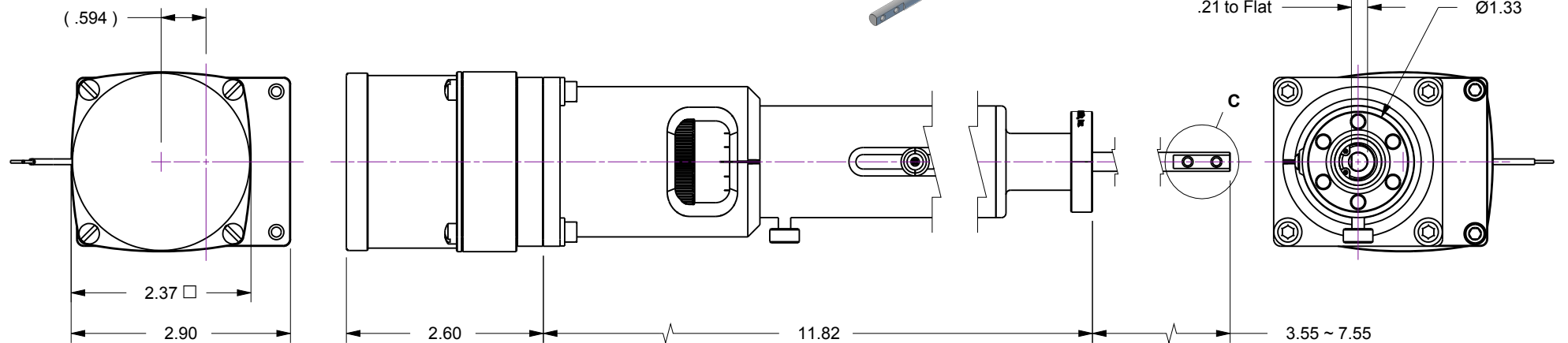
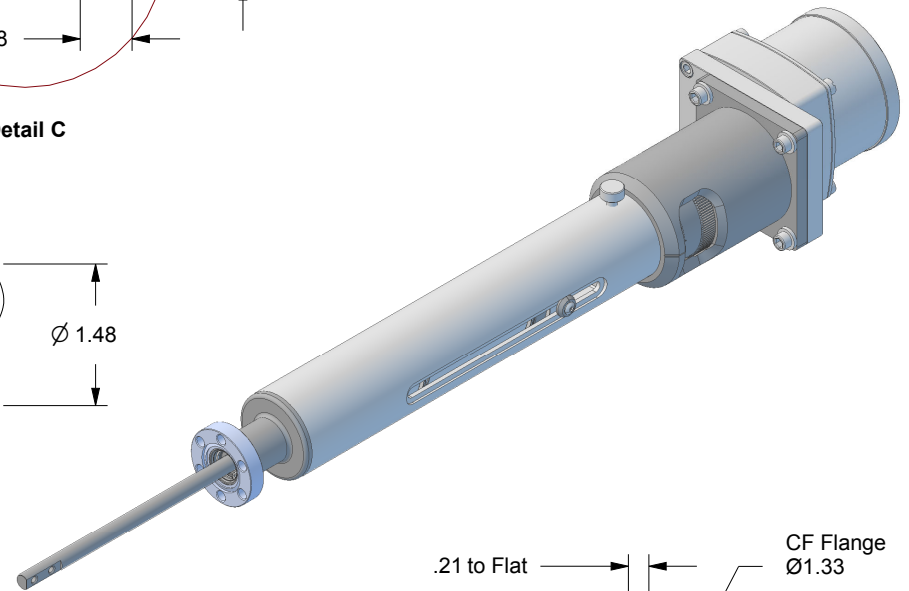
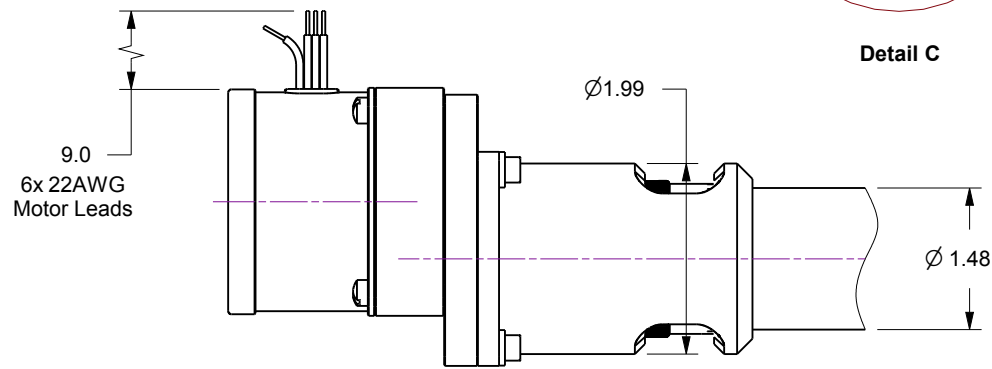
Notes

- HTL-133-4 / 4-Inch linear travel feedthrough with Option-21 Geared AC Motor...
- 126 oz-in torque, 10 RPM output speed
- Leak test to 5x10E-10 Standard cc/sec of He
- Protect flange seal surface (knife-edge) from damage

Rev.	Description	Date	Made By	Approval
B	Remodeled	3/13/2019	AL	



Detail C



UNCONTROLLED WEB DRAWING

Proprietary and Confidential
The information contained in this drawing is the sole property of Accu-Glass, Products Inc. Any reproduction, in part or as whole, without the written permission of Accu-Glass Products, Inc., is strictly prohibited.

Material
See Individual Components

Tolerances,
unless otherwise specified

.X ± .030
.XX ± .010
.XXX ± .005

Angles ± 0.5°
Finish 63Ra

Title

HTL-133-4-21

Drawn by
Date

Ligeti
9/3/2015

No. **113078.21**

Rev.

B

Approved

Sheet



Accu-Glass Products Inc.
25047 Anza Drive
Valencia, CA 91355
T 818-365-4215
F 818-365-7074
www.accuglassproducts.com