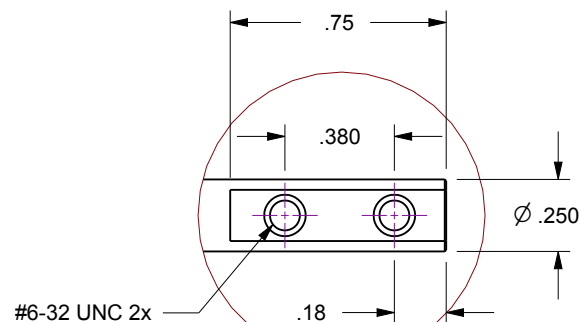


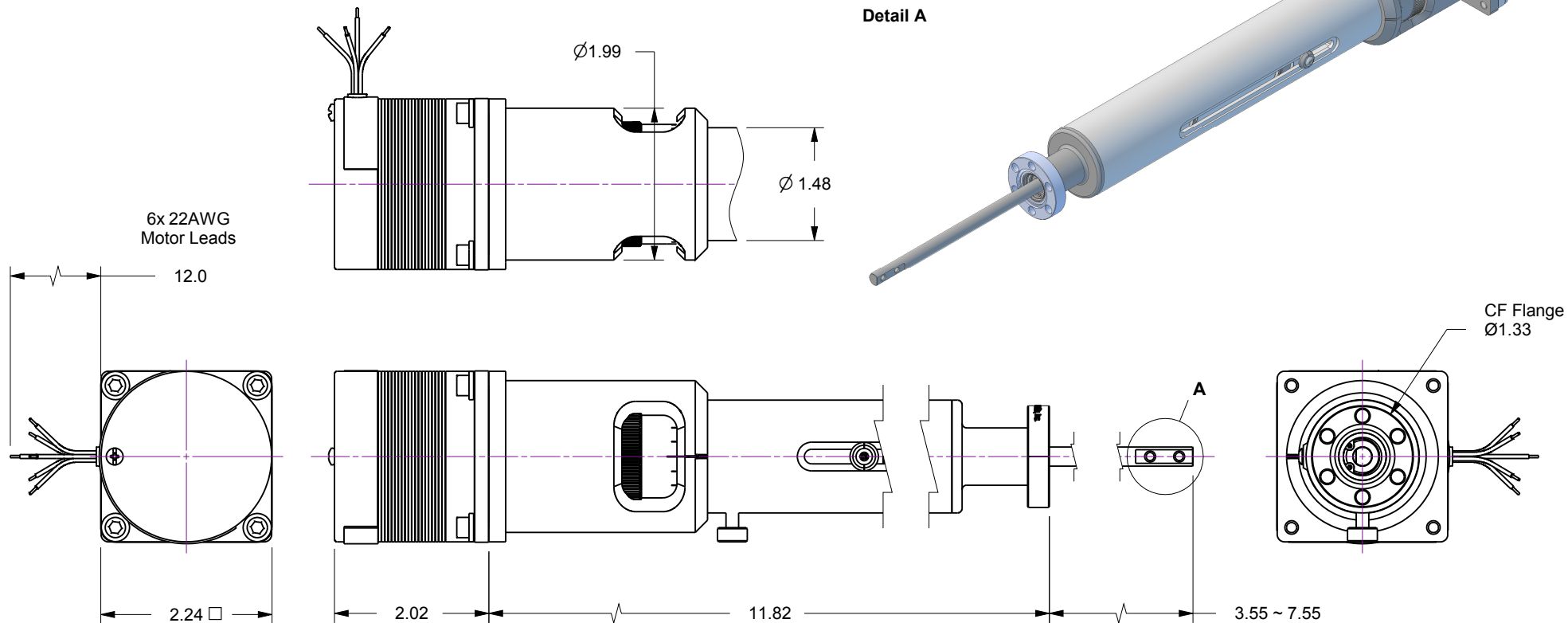
Notes

1. HTL-133-4 / 4-Inch linear travel feedthrough with Option-11 DC Stepper Motor...
75 oz-in torque, 200 full-step resolution
2. Leak test to 5x10E-10 Standard cc/sec of He
3. Protect flange seal surface (knife-edge) from damage

Rev.	Description	Date	Made By	Approval
B	Remodeled	3/13/2019	AL	



Detail A



UNCONTROLLED WEB DRAWING

Proprietary and Confidential
The information contained in this drawing is the sole property of Accu-Glass, Products Inc. Any reproduction, in part or as whole, without the written permission of Accu-Glass Products, Inc., is strictly prohibited.

Material
See Individual Components

Tolerances,
unless otherwise specified

.X ± .030	Angles ± 0.5° Finish 63Ra
.XX ± .010	
.XXX ± .005	

Title

HTL-133-4-11

Drawn by
Date

Ligeti
9/3/2015

No. **113078.11**

Rev.

B

Approved

Sheet



Accu-Glass Products Inc.
25047 Anza Drive
Valencia, CA 91355
T 818-365-4215
F 818-365-7074
www.accuglassproducts.com