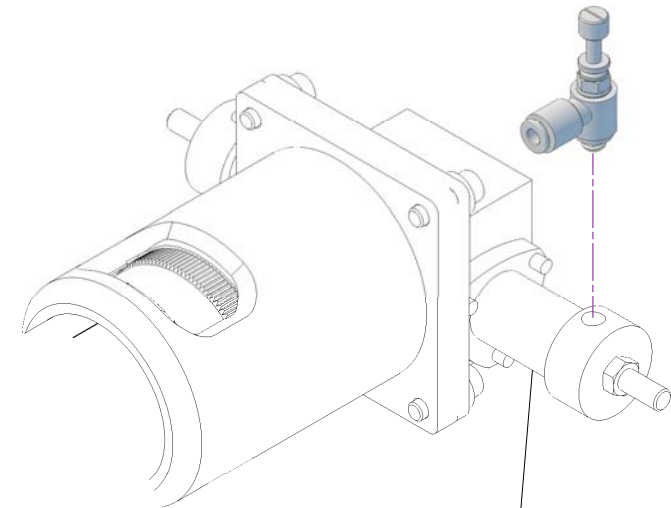
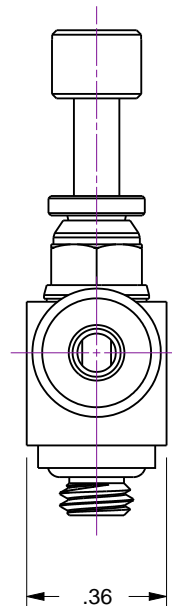
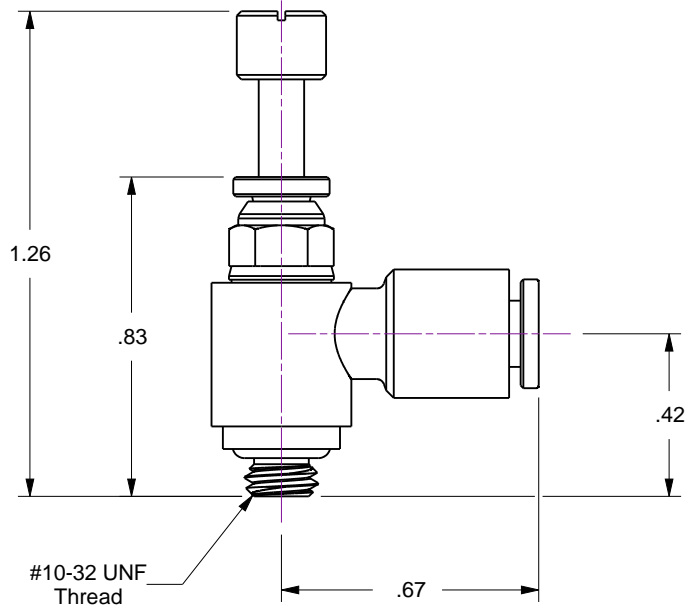
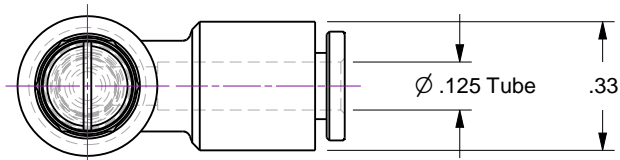


## Notes

- 10-32 x 1/8 inch tube Pneumatic Actuator Speed Control Valve Kit
- Used with AG bellows-sealed rotary motion feedthroughs fitted with 90° Pneumatic Actuator Option-31
- Kit includes two (2) valves

Rev.	Description	Date	Made By	Approval
A	Initial Release			



Rotary Motion Feedthrough  
fitted with a  $90^\circ$  Pneumatic Actuator  
(sold separately)



**Accu-Glass Products Inc.**  
25047 Anza Drive  
Valencia, CA 91355  
T 818-365-4215  
F 818-365-7074  
www.accuglassproducts.com

### UNCONTROLLED WEB DRAWING

Proprietary and Confidential  
The information contained in this drawing is the sole property of Accu-Glass, Products Inc. Any reproduction, in part or as whole, without the written permission of Accu-Glass Products, Inc., is strictly prohibited.

Material  
See Individual Components

Tolerances,  
unless otherwise specified

$.X \pm .030$	Angles $\pm 0.5^\circ$ Finish 63Ra
$.XX \pm .010$	
$.XXX \pm .005$	

Title

Spec Control Valve, 10-32 to 1/8 Inch Tube

Drawn by  
Date

Ligeti  
1/23/2018

No. **112687**

Rev.  
**B**

Approved

Sheet