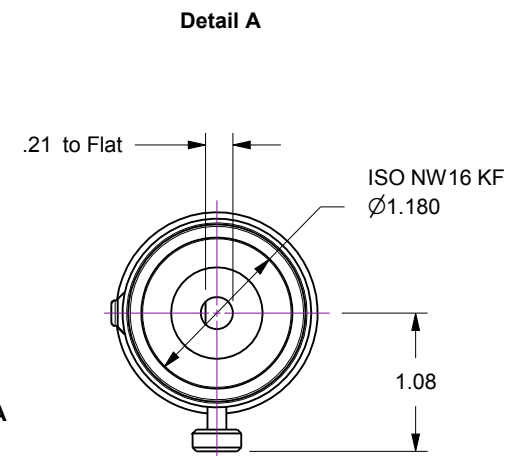
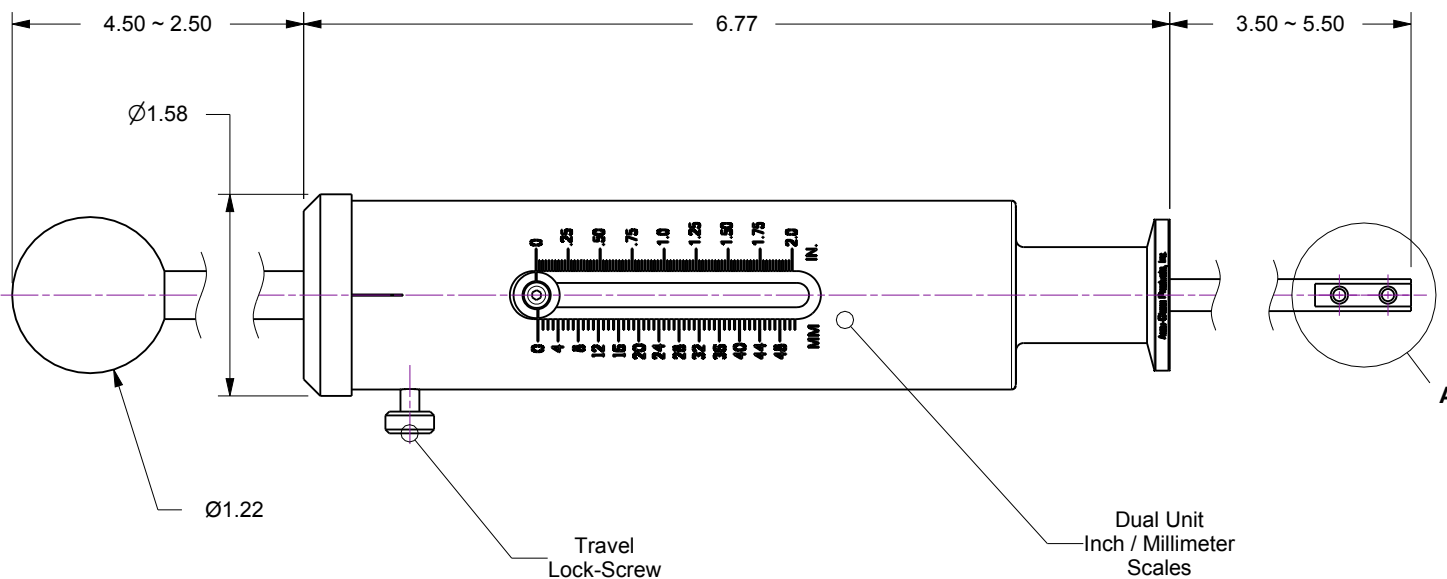
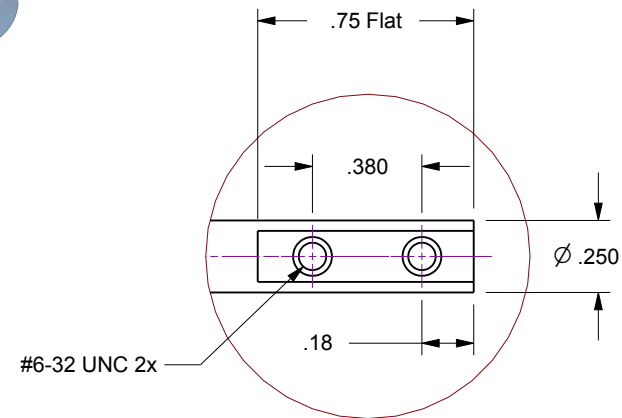
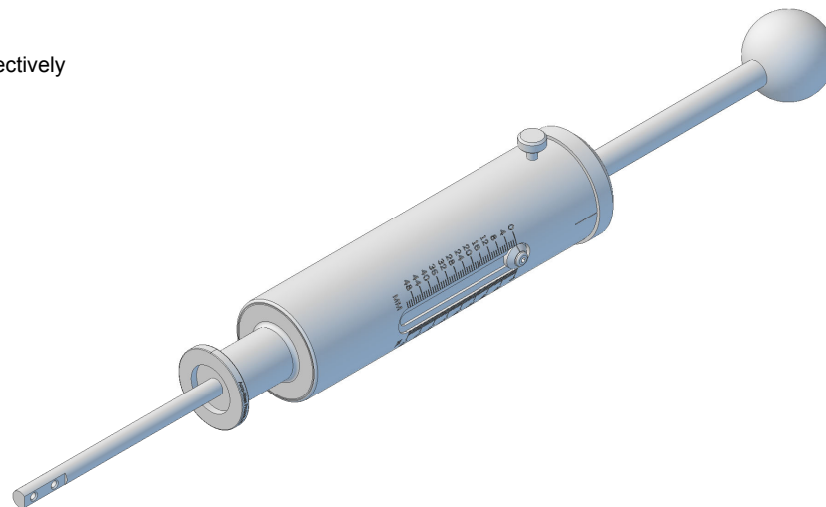


Notes

- 1. PHTL Manual, 2-Inch Travel Push-Pull Linear Feedthrough on ISO NW16 KF Flange
- 2. Leak test to 5x10E-10 Standard cc/sec of He
- 3. Protect flange seal surfaces from damage
- 4. Black anodized aluminum body finish
- 5. Resolution : 0.25 Inch / 1mm Metric scales respectively

Rev.	Description	Date	Made By	Approval
A	Initial Release			



Accu-Glass Products Inc.
 25047 Anza Drive
 Valencia, CA 91355
 T 818-365-4215
 F 818-365-7074
 www.accuglassproducts.com

UNCONTROLLED WEB DRAWING

Proprietary and Confidential
 The information contained in this drawing is the sole property of Accu-Glass, Products Inc. Any reproduction, in part or as whole, without the written permission of Accu-Glass Products, Inc., is strictly prohibited.

Material
 See Individual Components

Tolerances,
 unless otherwise specified

.X ± .030	Angles ± 0.5° Finish 63Ra
.XX ± .010	
.XXX ± .005	

Title PHTL-K16-2			
Drawn by Date	Ligeti 2/19/2019	No. 112057	Rev. A
Approved		Sheet	