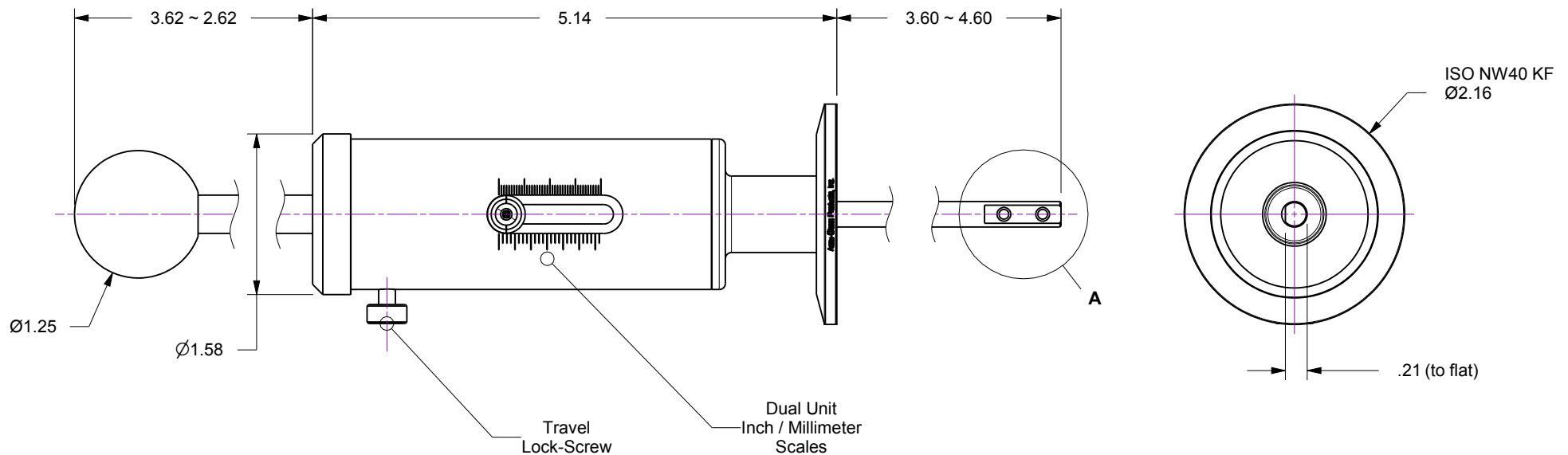
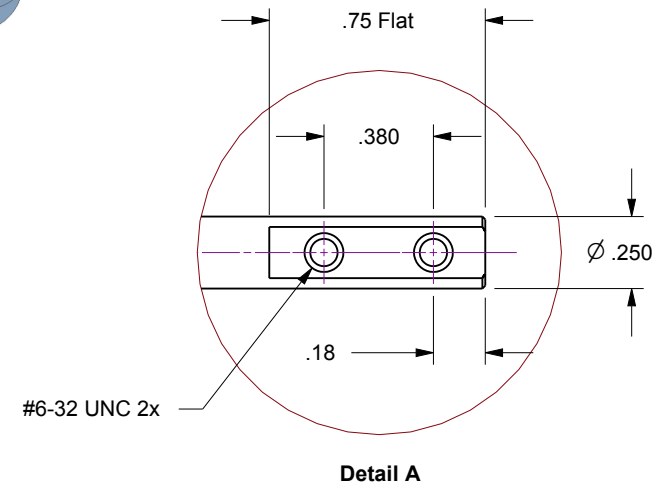
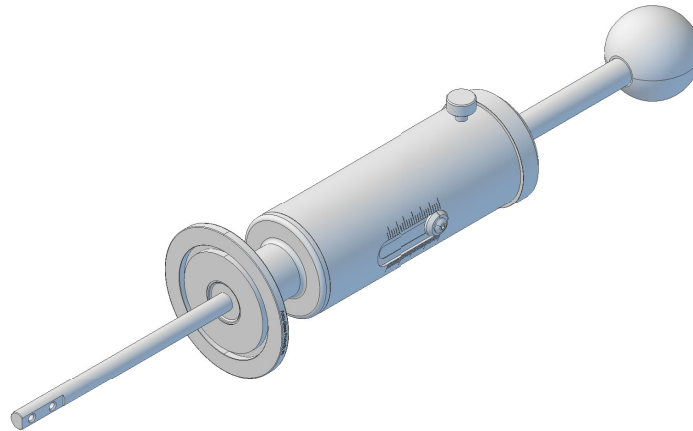


Notes

1. PHTL Manual, 1-Inch Travel Push-Pull Linear Feedthrough on ISO NW40 KF Flange
2. Leak test to 5x10E-10 Standard cc/sec of He
3. Protect flange seal surfaces from damage
4. Black anodized aluminum body finish
5. Resolution : 0.25 Inch / 1mm Metric scales respectively

Rev.	Description	Date	Made By	Approval
A	Initial Release			

**UNCONTROLLED WEB DRAWING**

Proprietary and Confidential
The information contained in this drawing is the sole property of Accu-Glass, Products Inc. Any reproduction, in part or as whole, without the written permission of Accu-Glass Products, Inc., is strictly prohibited.

Material
See Individual Components

Tolerances,
unless otherwise specified

.X ± .030
.XX ± .010
.XXX ± .005

Angles ± 0.5°
Finish 63Ra

Title

PHTL-K40-1

Drawn by
Date

Ligeti
2/19/2019

No. **112056**

Rev.
A

Approved

Sheet



Accu-Glass Products Inc.
25047 Anza Drive
Valencia, CA 91355
T 818-365-4215
F 818-365-7074
www.accuglassproducts.com