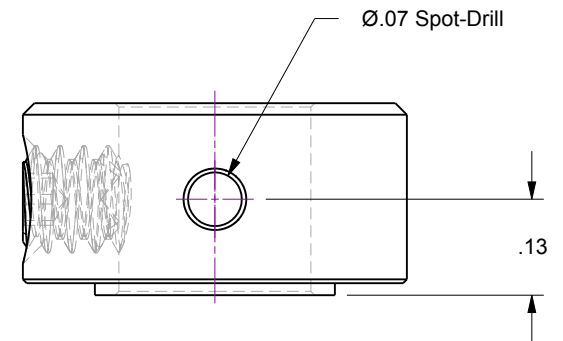
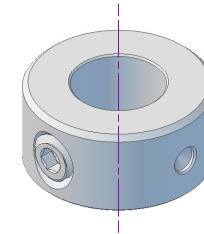
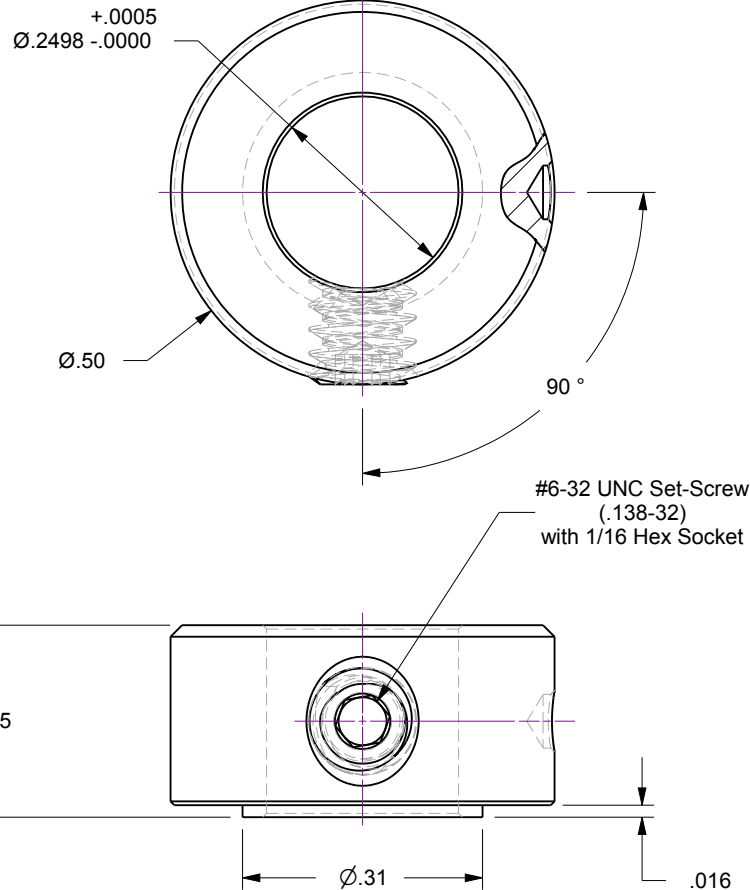


Notes

1. 1/4 Inch set-screw Collar for use with AGP precision ground shaft stock

Rev.	Description	Date	Made By	Approval
A	Initial Release			



Accu-Glass Products Inc.
25047 Anza Drive
Valencia, CA 91355
T 818-365-4215
F 818-365-7074
www.accuglassproducts.com

UNCONTROLLED WEB DRAWING

Proprietary and Confidential
The information contained in this drawing is the sole property of Accu-Glass, Products Inc. Any reproduction, in part or as whole, without the written permission of Accu-Glass Products, Inc., is strictly prohibited.

Material
Stainless Steel, 303

Tolerances,
unless otherwise specified

.X ± .030

.XX ± .010

.XXX ± .005

Angles ± 0.5°

Finish 63Ra

Title

SET-COLL-250

Drawn by
Date

Ligeti
2/19/2019

No.

112012

Rev.

A

Approved

Sheet

Sheet