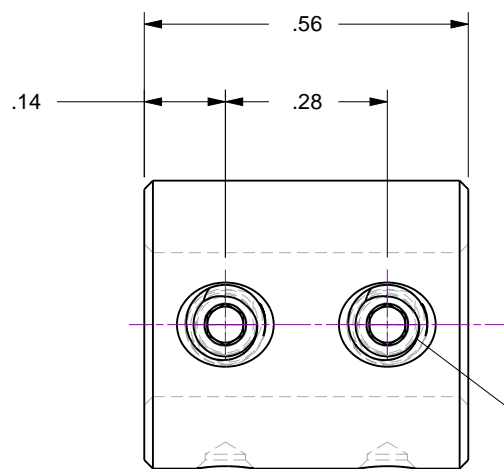


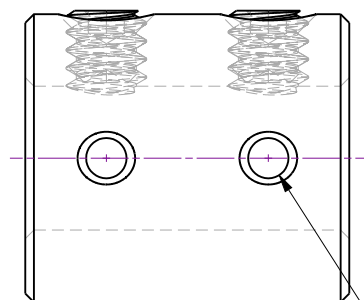
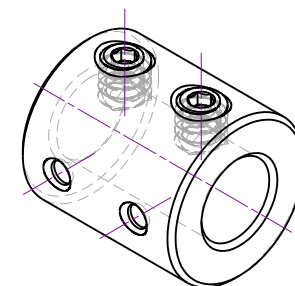
Notes

1. 300 Series stainless steel construction

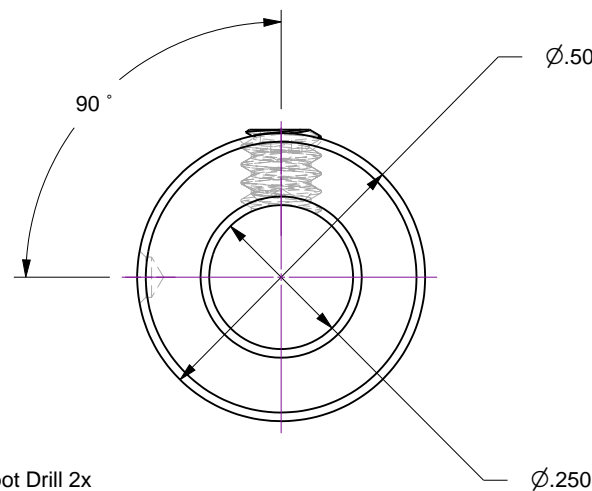
Rev.	Description	Date	Made By	Approval
A	Initial Release			



2x
6-32 Set Screws
Included



Ø.07 Spot Drill 2x



Accu-Glass Products Inc.
25047 Anza Drive
Valencia, CA 91355
T 818-365-4215
F 818-365-7074
www.accuglassproducts.com

UNCONTROLLED WEB DRAWING

Proprietary and Confidential
The information contained in this drawing is the sole property of Accu-Glass, Products Inc. Any reproduction, in part or as whole, without the written permission of Accu-Glass Products, Inc., is strictly prohibited.

Material
See Individual Components

Tolerances,
unless otherwise specified

.X ± .030	Angles ± 0.5° Finish 63Ra
.XX ± .010	
.XXX ± .005	

Title

Coupling, .25 Shaft Diameter Inline Sleeve

Drawn by
Date

Ligeti
6/19/2014

No. **112011**

Rev.
A

Approved

Sheet