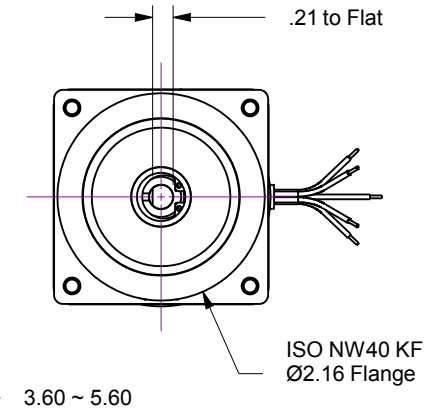
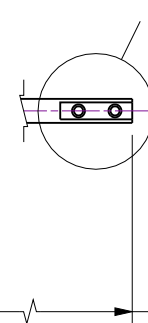
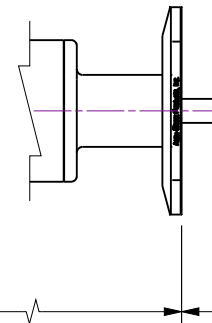
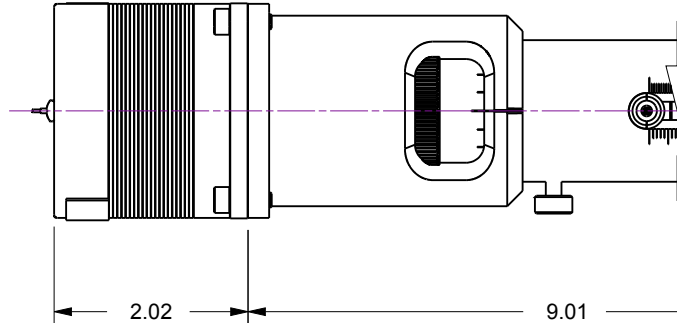
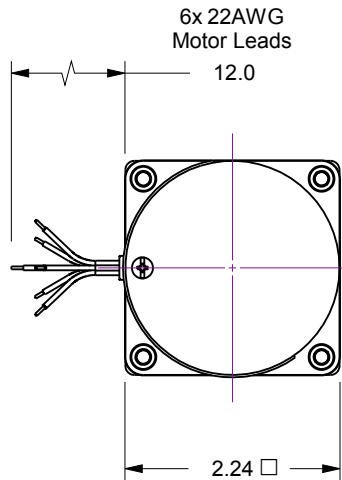
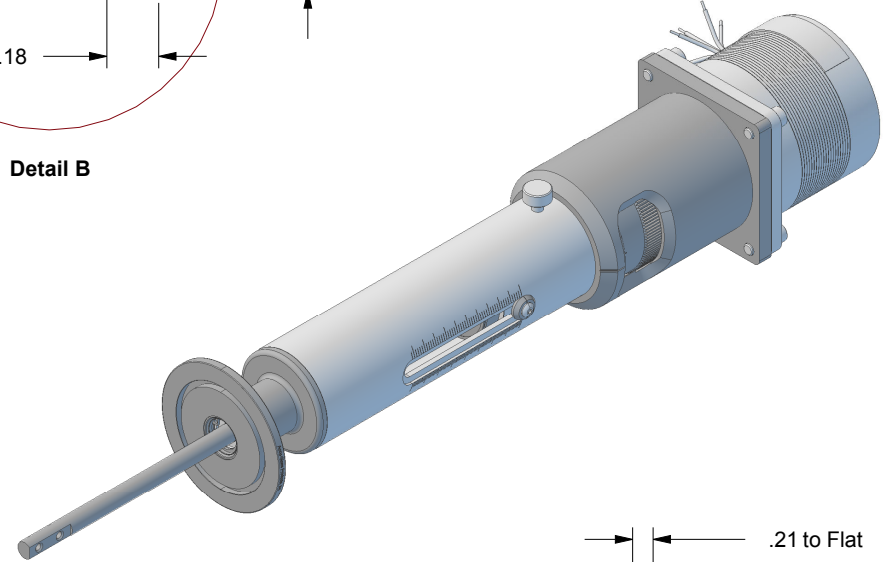
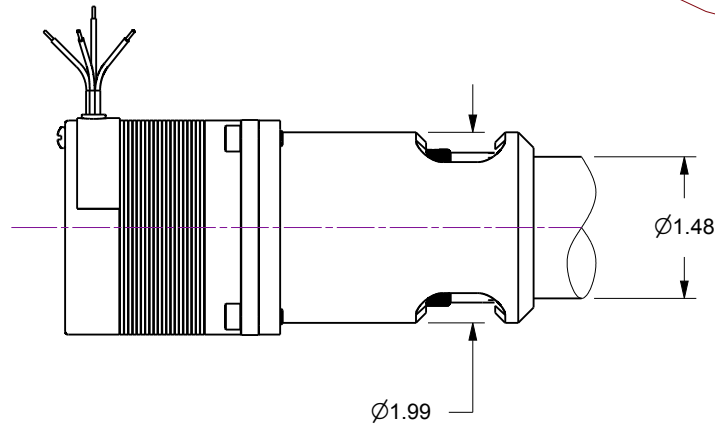
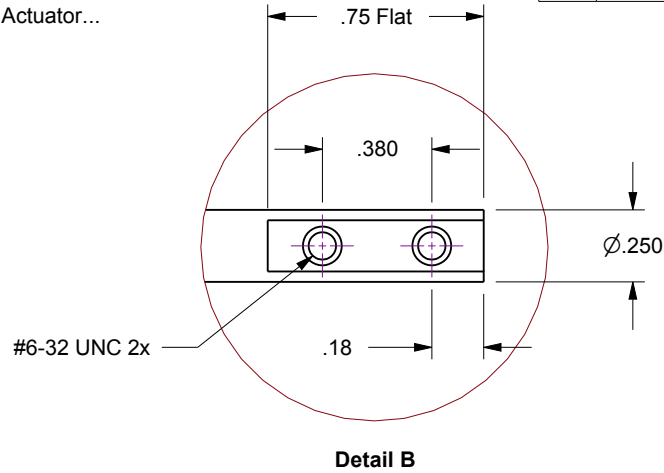


Notes

1. HTL-K40-2-11... 2-Inch Linear Travel Feedthrough w/Option-11, Motorized Actuator... 75 oz-in Torque, 200 full-step resolution DC Stepper Motor
2. Welded bellows sealed air-to-vacuum interface
3. Leak test to 5x10E-10 Standard cc/sec of He
4. Maximum Loads : 5lb Axial / 5lb lateral @ 2 inches from flange face
5. Resolution : .001 Rotary scale / .025 inch Linear scale

Rev.	Description	Date	Made By	Approval
B	Remodeled	4/10/2019	AL	



UNCONTROLLED WEB DRAWING

Proprietary and Confidential
The information contained in this drawing is the sole property of Accu-Glass, Products Inc. Any reproduction, in part or as whole, without the written permission of Accu-Glass Products, Inc., is strictly prohibited.

Material
See Individual Components

Tolerances,
unless otherwise specified

.X ± .030
.XX ± .010
.XXX ± .005

Angles ± 0.5°
Finish 63Ra

Title

HTL-K40-2-11

Drawn by
Date

Ligeti
4/9/2019

No. 102280.11

Rev.

B

Approved

Sheet



Accu-Glass Products Inc.
25047 Anza Drive
Valencia, CA 91355
T 818-365-4215
F 818-365-7074
www.accuglassproducts.com