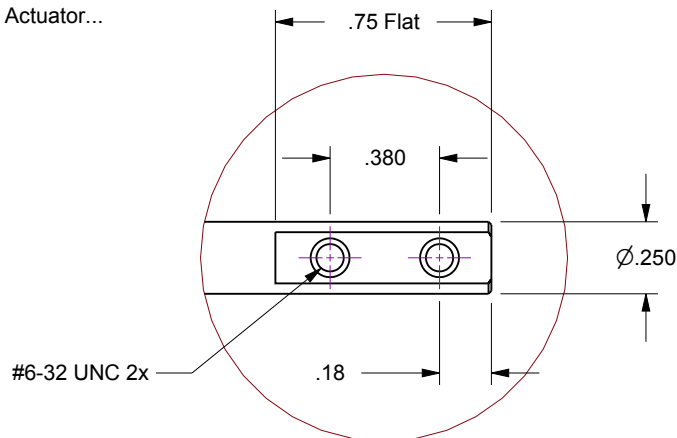


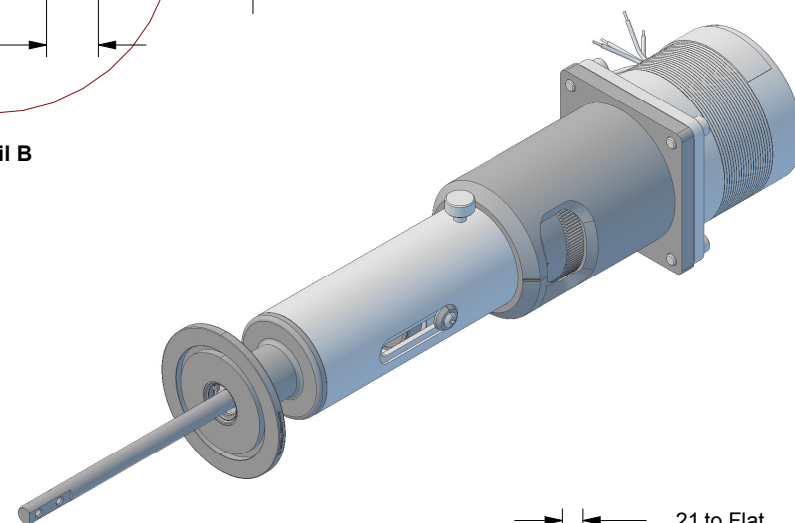
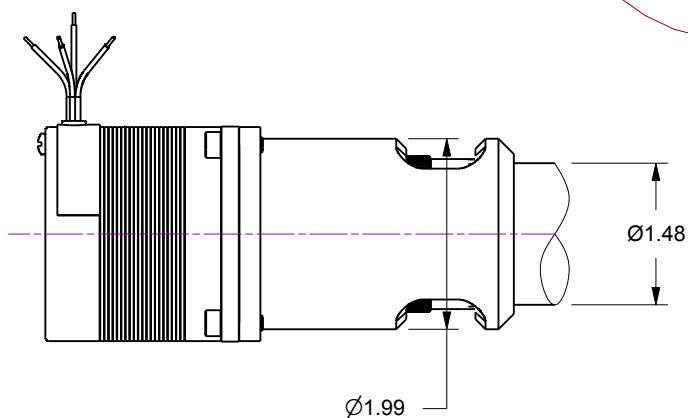
## Notes

1. HTL-K40-1-11... 1-Inch Linear Travel Feedthrough w/Option-11, Motorized Actuator... 75 oz-in Torque, 200 full-step resolution DC Stepper Motor
2. Welded bellows sealed air-to-vacuum interface
3. Leak test to 5x10E-10 Standard cc/sec of He
4. Maximum Loads : 5lb Axial / 5lb Lateral @ 2-Inch from flange face
5. Resolution : .001 Rotary scale / .025 Inch Linear scale

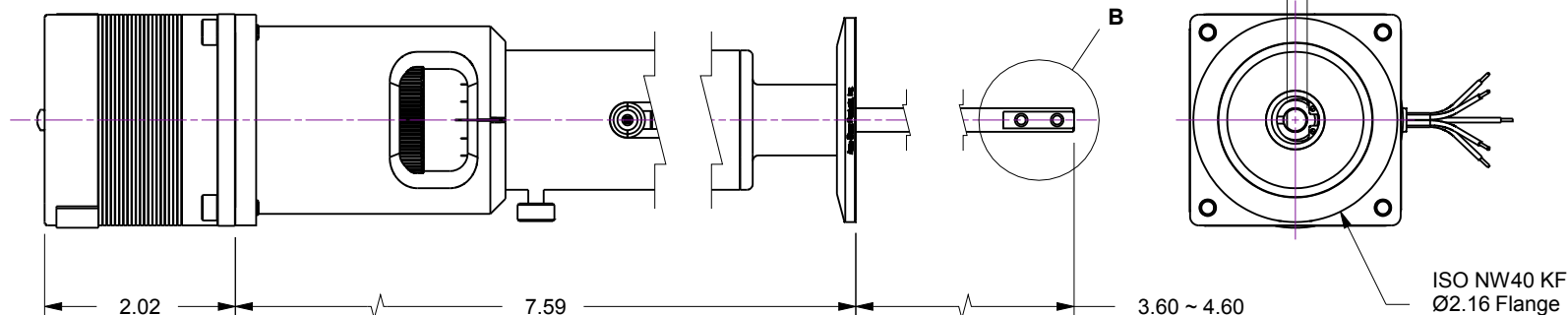
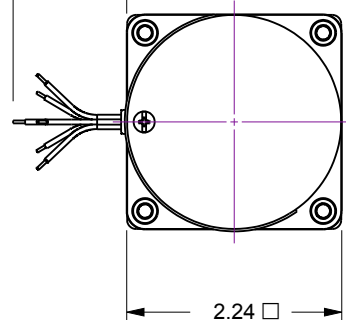
Rev.	Description	Date	Made By	Approval
B	Remodeled	4/8/2019	AL	



Detail B



6x 22AWG  
Motor Leads  
12.0



**Accu-Glass Products Inc.**  
25047 Anza Drive  
Valencia, CA 91355  
T 818-365-4215  
F 818-365-7074  
www.accuglassproducts.com

**UNCONTROLLED WEB DRAWING**

Proprietary and Confidential  
The information contained in this drawing is the sole property of Accu-Glass, Products Inc. Any reproduction, in part or as whole, without the written permission of Accu-Glass Products, Inc., is strictly prohibited.

Material  
See Individual Components

Tolerances,  
unless otherwise specified

.X ± .030	Angles ± 0.5° Finish 63Ra
.XX ± .010	
.XXX ± .005	

Title

HTL-K40-1-11

Drawn by  
Date

Ligeti  
4/8/2019

No.

**102270.11**

Rev.

**B**

Approved

Sheet