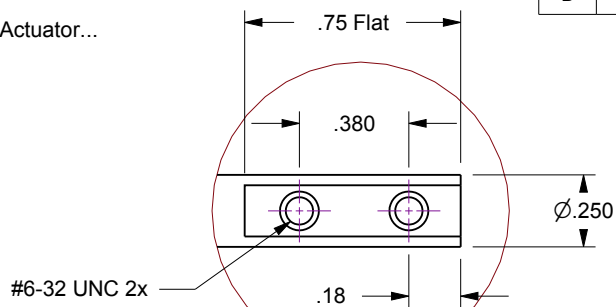


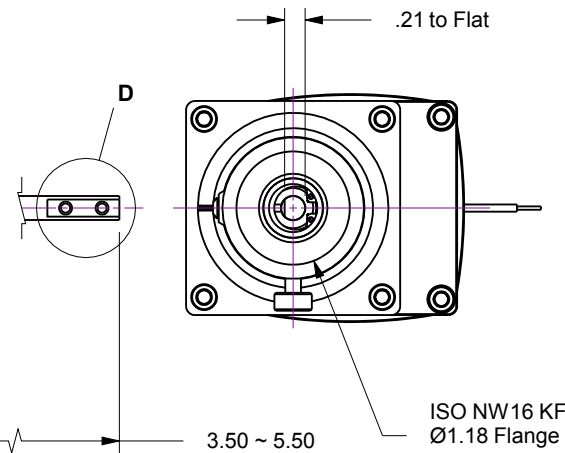
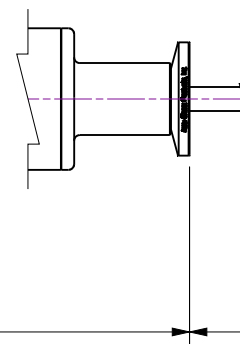
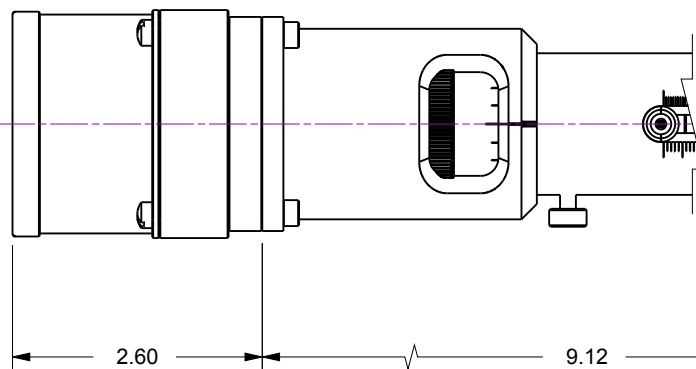
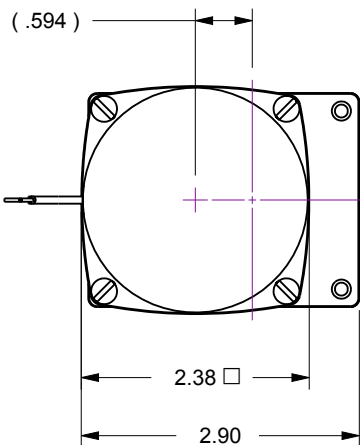
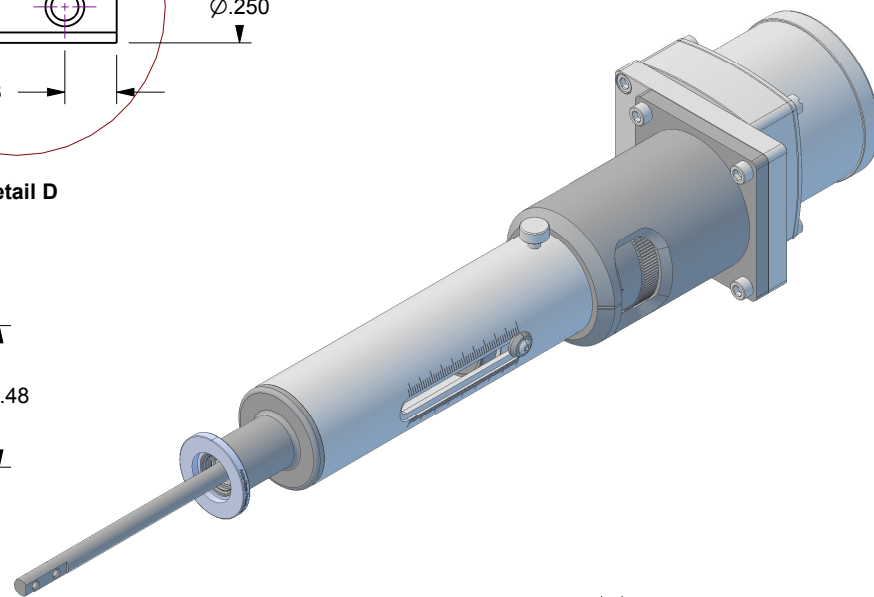
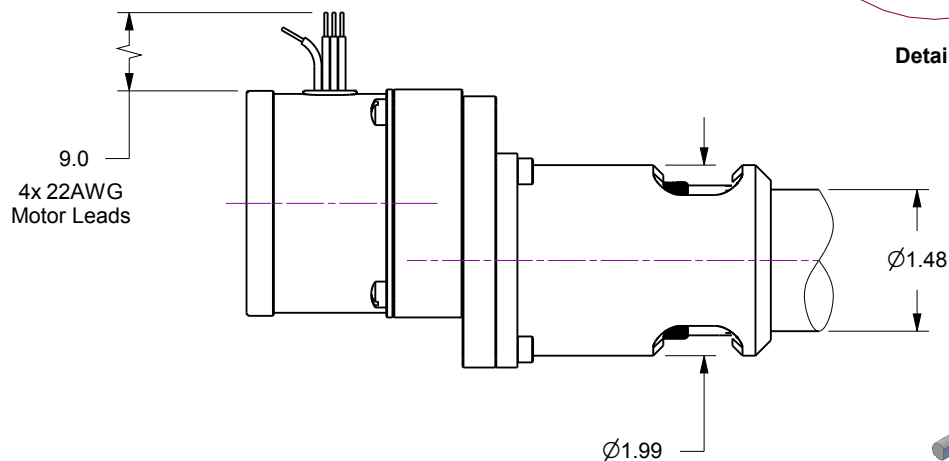
## Notes

1. HTL-K16-2-21... 2-Inch Linear Travel Feedthrough w/Option-21, Motorized Actuator...  
126 oz-in Torque, 10-RPM, Geared AC Motor
2. Welded bellows sealed air-to-vacuum interface
3. Leak test to 5x10E-10 Standard cc/sec of He
4. Maximum Loads : 5lb Axial / 5lb lateral @ 2 inches from flange face
5. Resolution : .001 Rotary scale / .025 inch Linear scale

Rev.	Description	Date	Made By	Approval
B	Remodeled	4/9/2019	AL	



Detail D



## UNCONTROLLED WEB DRAWING

Proprietary and Confidential  
The information contained in this drawing is the sole property of Accu-Glass, Products Inc. Any reproduction, in part or as whole, without the written permission of Accu-Glass Products, Inc., is strictly prohibited.

Material  
See Individual Components

Tolerances,  
unless otherwise specified

.X ± .030  
.XX ± .010  
.XXX ± .005

Angles ± 0.5°  
Finish 63Ra

Title

HTL-K16-2-21

Drawn by  
Date

Ligeti  
4/9/2019

No. **102260.21**

Rev.

**B**

Approved

Sheet



**Accu-Glass Products Inc.**  
25047 Anza Drive  
Valencia, CA 91355  
T 818-365-4215  
F 818-365-7074  
www.accuglassproducts.com