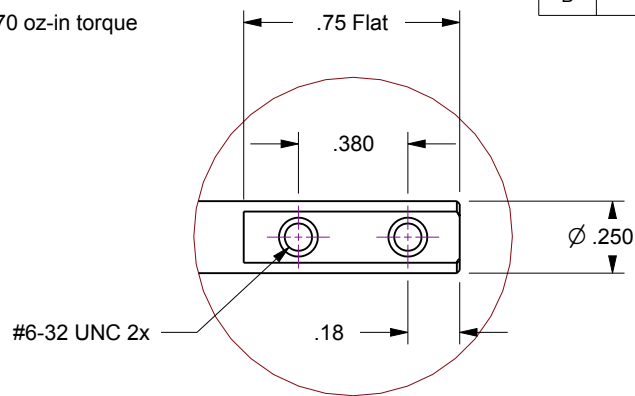


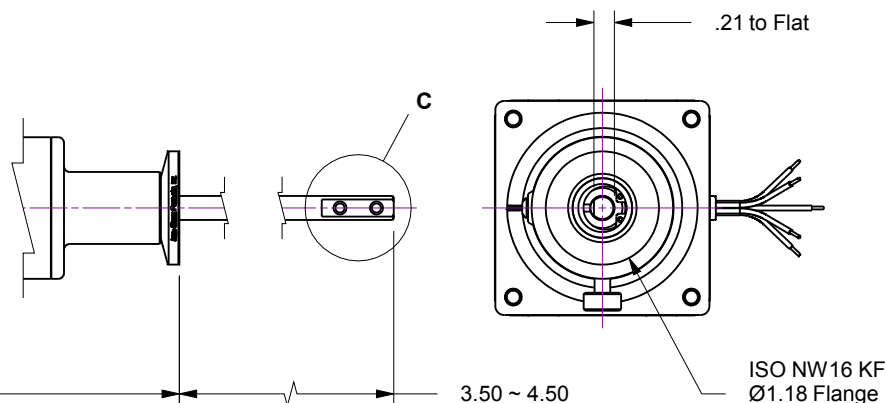
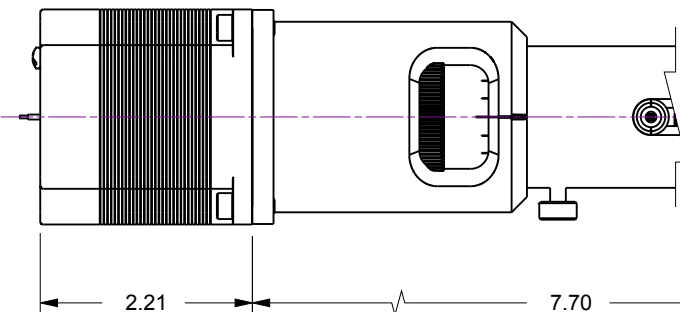
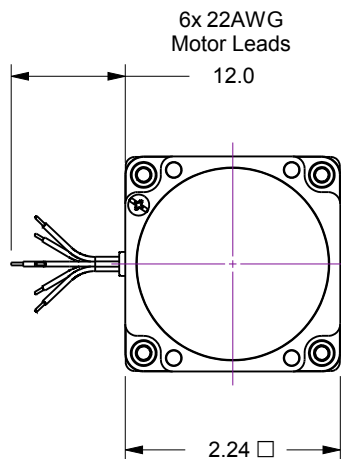
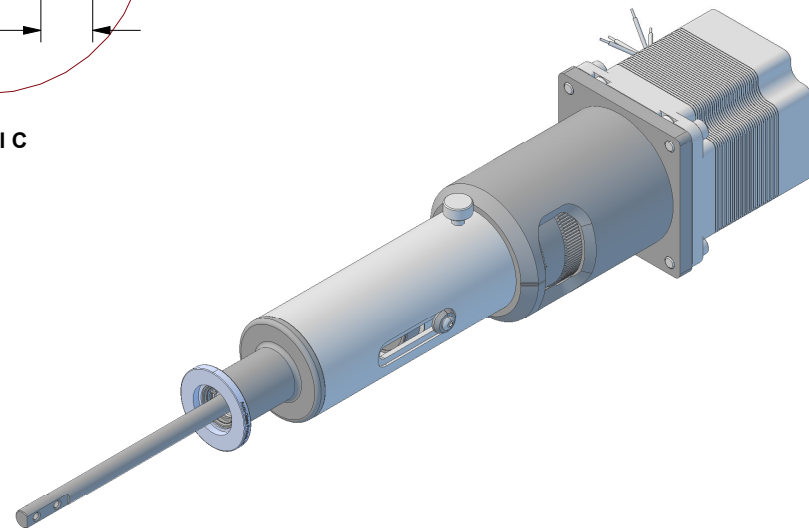
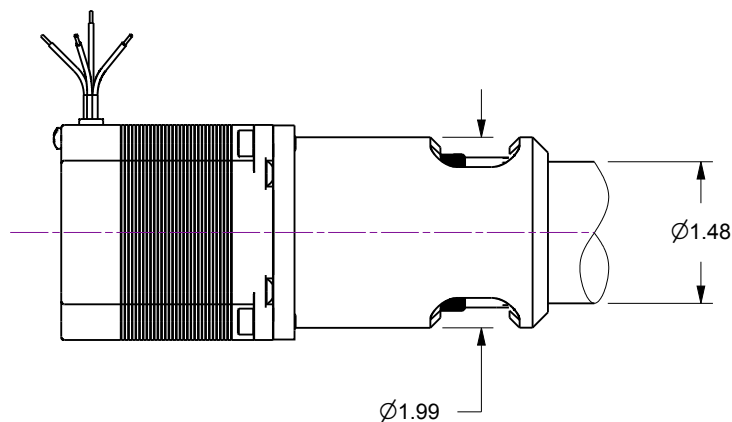
Notes

1. HTL-K16-1-12... 1-Inch Linear Travel Feedthrough w/Actuator Option-12, 170 oz-in torque DC Stepper Motor, 200 full-step resolution
2. Welded bellows sealed air-to-vacuum interface
3. Leak test to 5x10E-10 Standard cc/sec of He
4. Maximum Loads : 5lb Axial / 5lb Lateral @ 2-inch from flange face
5. Scale Resolution : .025 inch Linear

Rev.	Description	Date	Made By	Approval
B	Remodel	4/4/2019	AL	



Detail C

ISO NW16 KF
Ø1.18 Flange

UNCONTROLLED WEB DRAWING

Proprietary and Confidential
The information contained in this drawing is the sole property of Accu-Glass, Products Inc. Any reproduction, in part or as whole, without the written permission of Accu-Glass Products, Inc., is strictly prohibited.

Material
See Individual Components

Tolerances,
unless otherwise specified

.X ± .030
.XX ± .010
.XXX ± .005

Angles ± 0.5°
Finish 63Ra

Title

HTL-K16-1-12

Drawn by
Date

Ligeti
4/4/2019

No.

102250.12

Rev.

B

Approved

Sheet



Accu-Glass Products Inc.
25047 Anza Drive
Valencia, CA 91355
T 818-365-4215
F 818-365-7074
www.accuglassproducts.com