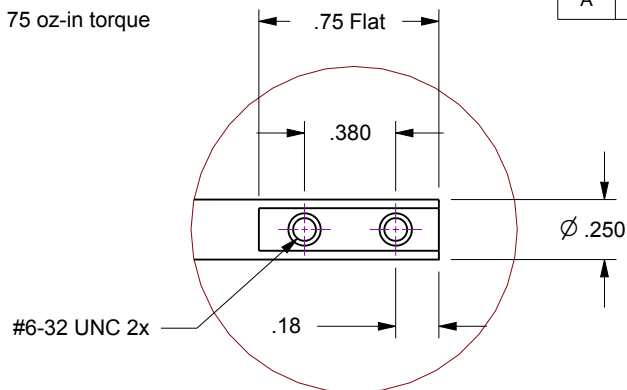


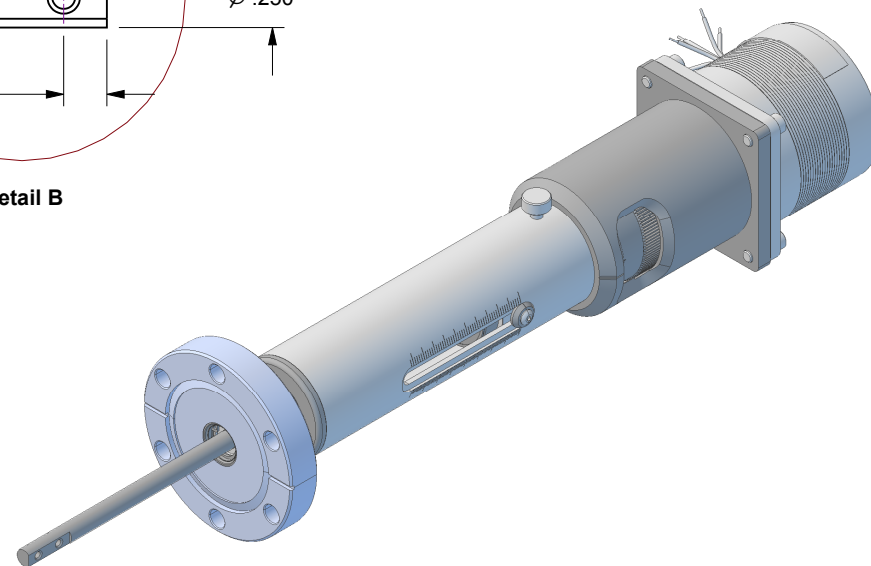
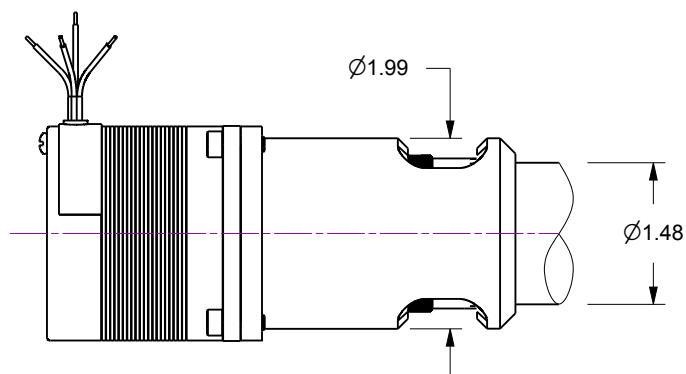
Notes

1. HTL-275-2-11... 2-Inch Linear Travel Feedthrough w/Actuator Option-11, 75 oz-in torque DC Stepper Motor, 200 full-step resolution
2. Welded bellows sealed air-to-vacuum interface
3. Leak test to 5×10^{-10} Standard cc/sec of He
4. Maximum Loads : 5lb Axial / 5lb Lateral @ 2-inch from flange face
5. Scale Resolution : .025 inch Linear

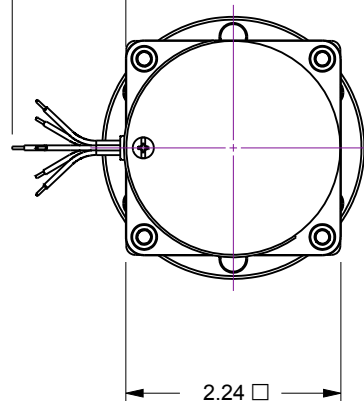
| Rev. | Description | Date | Made By | Approval |
|------|-----------------|------|---------|----------|
| A | Initial Release | | | |



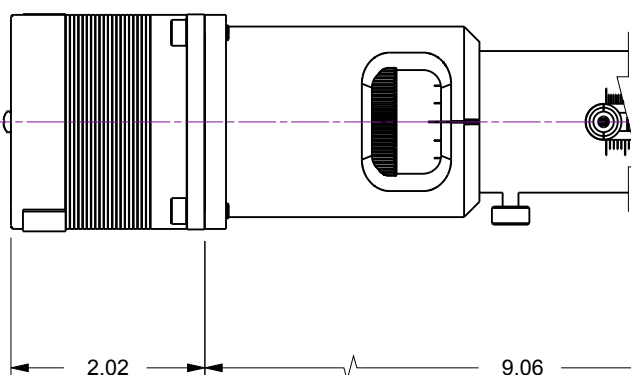
Detail B

6x 22AWG
Motor Leads

12.0



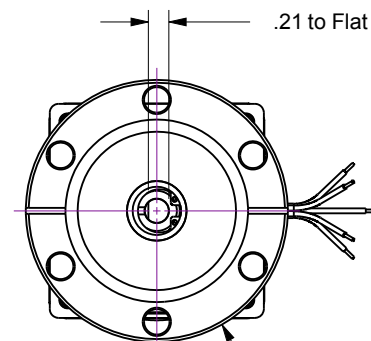
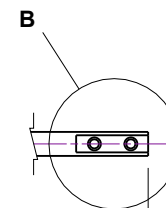
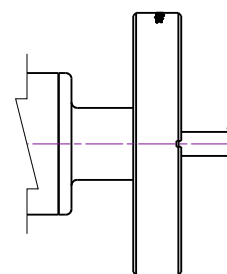
2.24



2.02

9.06

3.55 ~ 5.55



.21 to Flat

CF Flange
Ø2.73

UNCONTROLLED WEB DRAWING

Proprietary and Confidential
The information contained in this drawing is the sole property of Accu-Glass, Products Inc. Any reproduction, in part or as whole, without the written permission of Accu-Glass Products, Inc., is strictly prohibited.

Material
See Individual Components

Tolerances,
unless otherwise specified

.X ± .030

.XX ± .010

.XXX ± .005

Angles ± 0.5°
Finish 63Ra

Title

HTL-275-2 -11

Drawn by
DateLigeti
4/2/2019

No. 102230.11

Rev.

B

Approved

Sheet



Accu-Glass Products Inc.
25047 Anza Drive
Valencia, CA 91355
T 818-365-4215
F 818-365-7074
www.accuglassproducts.com