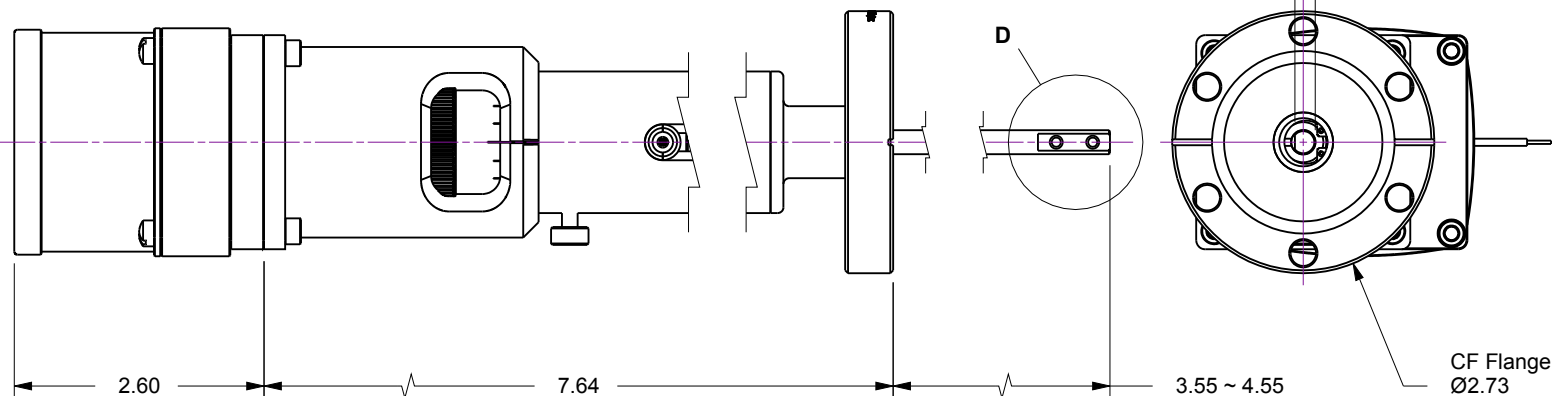
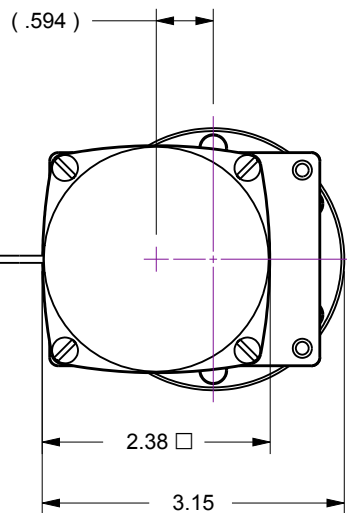
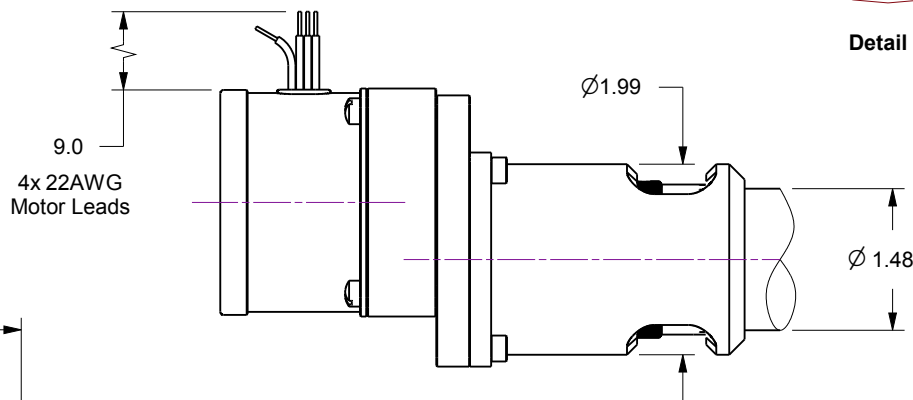
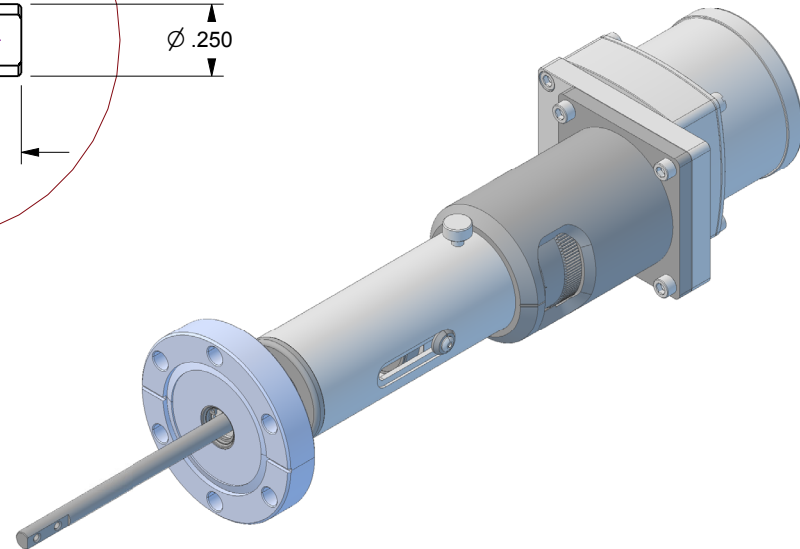
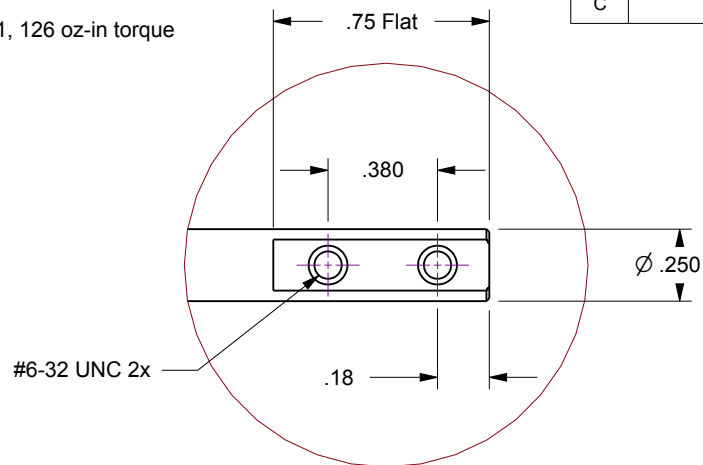


Notes

1. HTL-275-1-21... 1-Inch Linear Travel Feedthrough w/Actuator Option-21, 126 oz-in torque Geared 10 RPM AC Motor
2. Welded bellows sealed air-to-vacuum interface
3. Leak test to 5x10E-10 Standard cc/sec of He
4. Maximum Loads : 5lb Axial / 5lb Lateral @ 2-inch from flange face
5. Scale Resolution : .001 inch Rotary / .025 inch Linear

Rev.	Description	Date	Made By	Approval
C	Remodeled	3/21/2019	AL	



Accu-Glass Products Inc.
25047 Anza Drive
Valencia, CA 91355
T 818-365-4215
F 818-365-7074
www.accuglassproducts.com

UNCONTROLLED WEB DRAWING

Proprietary and Confidential
The information contained in this drawing is the sole property of Accu-Glass, Products Inc. Any reproduction, in part or as whole, without the written permission of Accu-Glass Products, Inc., is strictly prohibited.

Material
See Individual Components

Tolerances,
unless otherwise specified

.X ± .030
.XX ± .010
.XXX ± .005

Angles ± 0.5°
Finish 63Ra

Title

HTL-275-1-21

Drawn by
Date

Ligeti
3/21/2019

No.

102220.21

Rev.

C

Approved

Sheet