

1

2

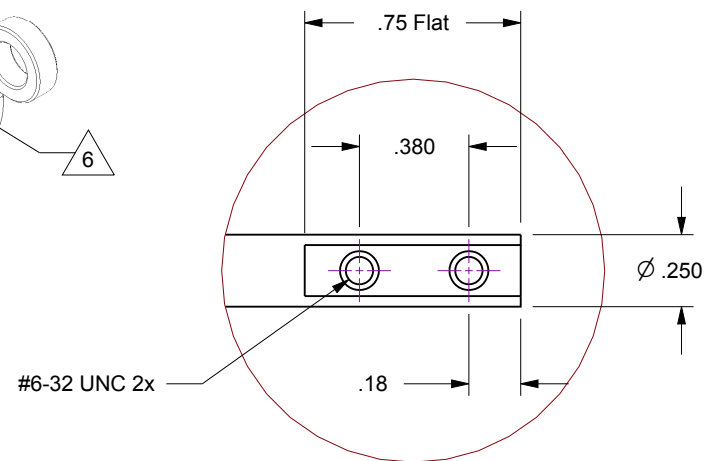
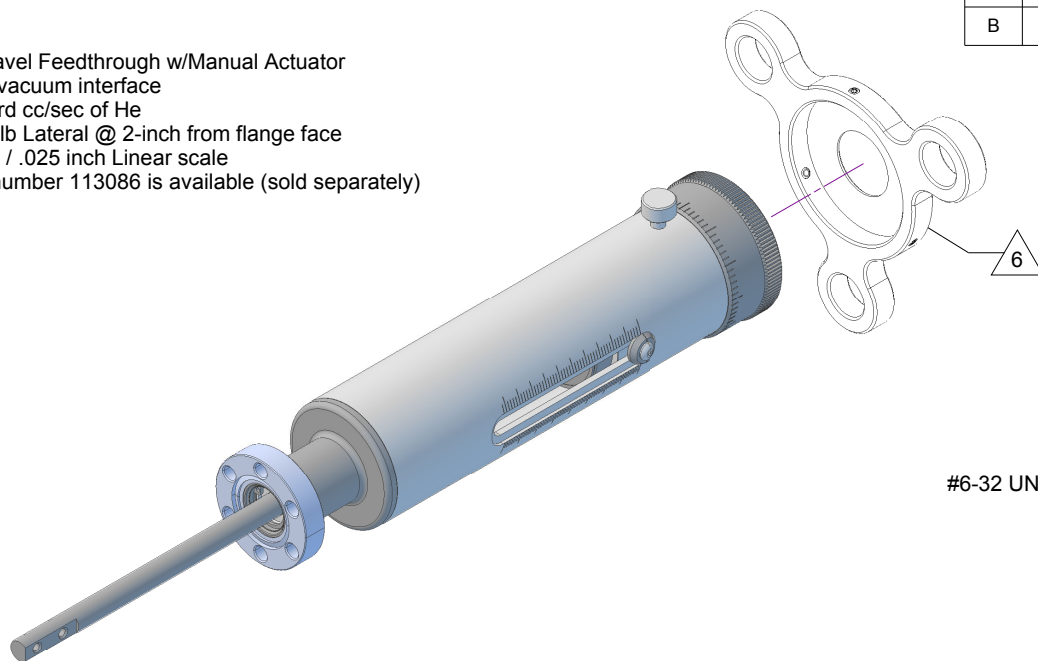
3

4

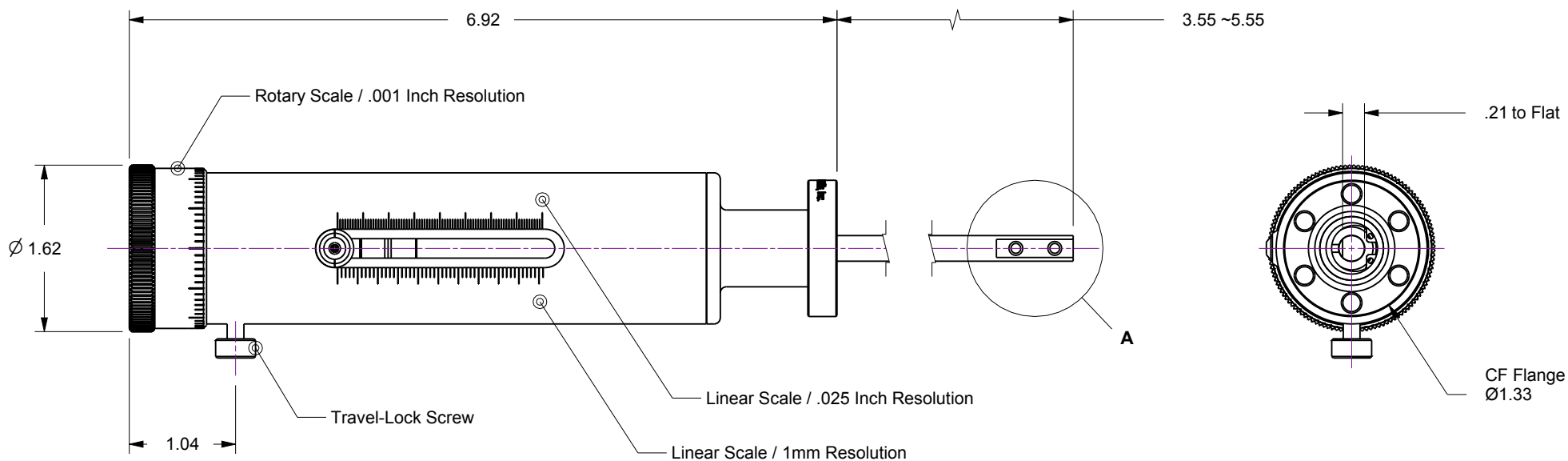
## Notes

1. HTL-133-2... 2-Inch Linear Travel Feedthrough w/Manual Actuator
2. Welded bellows sealed air-to-vacuum interface
3. Leak test to  $5 \times 10^{-10}$  Standard cc/sec of He
4. Maximum Loads : 5lb Axial / 5lb Lateral @ 2-inch from flange face
5. Resolution : .001 Rotary scale / .025 inch Linear scale
6. Optional 'Speed-Handle' part number 113086 is available (sold separately)

Rev.	Description	Date	Made By	Approval
B	Remodeled	4/1/2019	AL	



Detail A

**UNCONTROLLED WEB DRAWING**

Proprietary and Confidential  
The information contained in this drawing is the sole property of Accu-Glass, Products Inc. Any reproduction, in part or as whole, without the written permission of Accu-Glass Products, Inc., is strictly prohibited.

Material  
See Individual Components

Tolerances,  
unless otherwise specified

.X ± .030	Angles ± 0.5° Finish 63Ra
.XX ± .010	
.XXX ± .005	

Title

HTL-133-2

Drawn by  
Date

Ligeti  
4/1/2019

No. **102210**

Rev.

**B**

Approved

Sheet



**Accu-Glass Products Inc.**  
25047 Anza Drive  
Valencia, CA 91355  
T 818-365-4215  
F 818-365-7074  
www.accuglassproducts.com