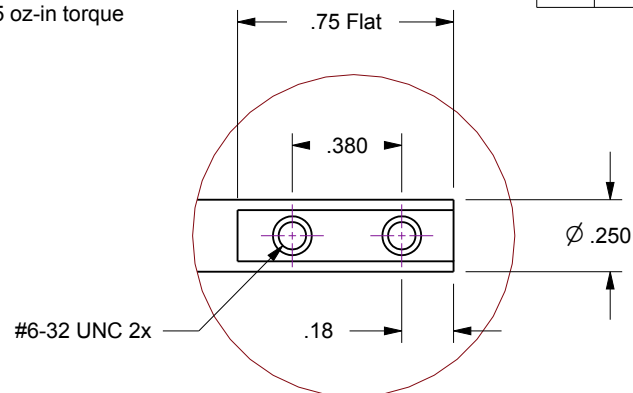


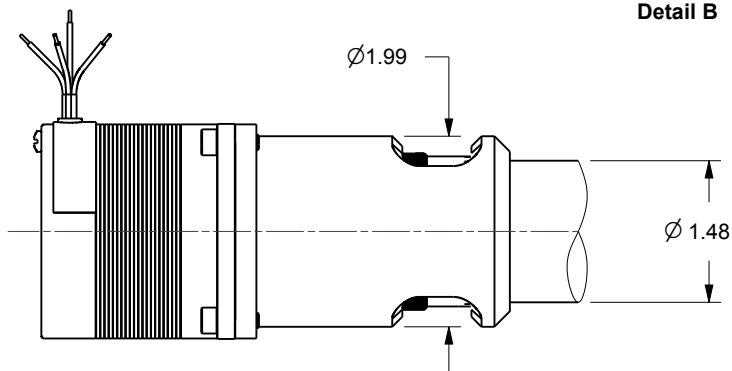
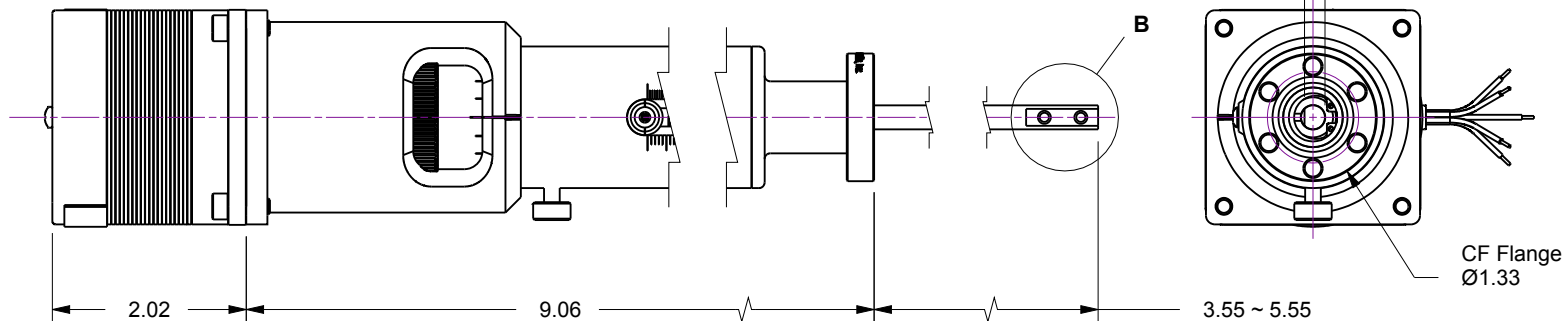
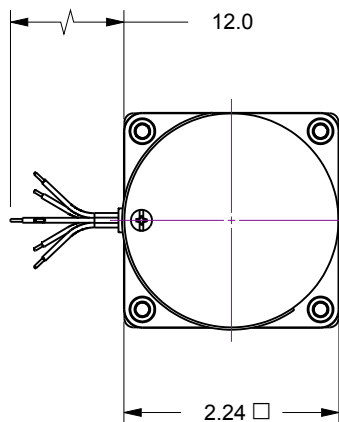
Notes

1. HTL-133-2-11... 2-Inch Linear Travel Feedthrough w/Actuator Option-11, 75 oz-in torque DC Stepper Motor, 200 full-step resolution
2. Welded bellows sealed air-to-vacuum interface
3. Leak test to 5x10E-10 Standard cc/sec of He
4. Maximum Loads : 5lb Axial / 5lb Lateral @ 2-inch from flange face
5. Scale Resolution : .025 inch Linear

| Rev. | Description | Date | Made By | Approval |
|------|-------------|----------|---------|----------|
| B | Remodeled | 4/1/2019 | AL | |



Detail B

6x 22AWG
Motor LeadsCF Flange
Ø1.33

Accu-Glass Products Inc.
25047 Anza Drive
Valencia, CA 91355
T 818-365-4215
F 818-365-7074
www.accuglassproducts.com

UNCONTROLLED WEB DRAWING

Proprietary and Confidential
The information contained in this drawing is the sole property of Accu-Glass, Products Inc. Any reproduction, in part or as whole, without the written permission of Accu-Glass Products, Inc., is strictly prohibited.

Material
See Individual Components

Tolerances,
unless otherwise specified

.X ± .030
.XX ± .010
.XXX ± .005

Angles ± 0.5°
Finish 63Ra

Title

HTL-133-2-11

Drawn by
DateLigeti
4/1/2019

No.

102210.11

Rev.

B

Approved

Sheet