

1

2

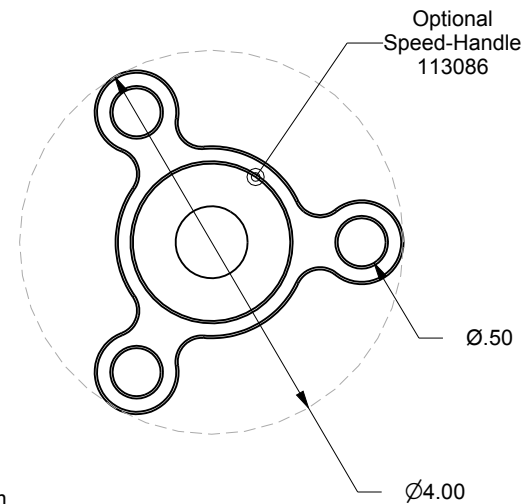
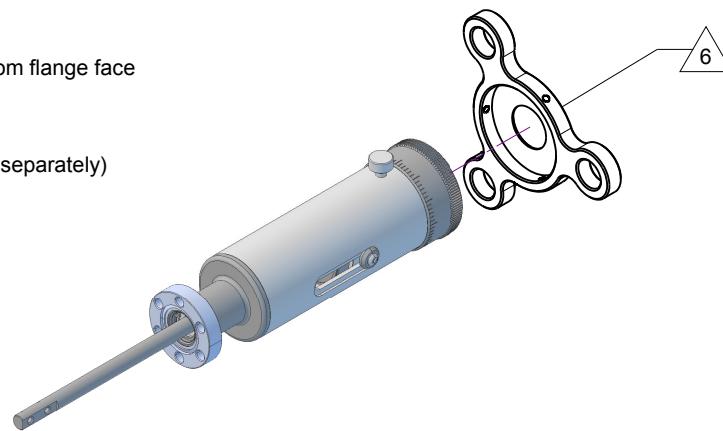
3

4

Notes

1. Manual Actuation
2. Maximum Load : 5 lb Axcial / 5 lb lateral at 2 inch from flange face
3. .025 Resolution Linear Scale
4. Welded bellows sealed linear interface
5. Leak test to 5x10E-10 Standard cc/sec of He
6. Optional 'Speed-Handle' part number 113086 (sold separately)

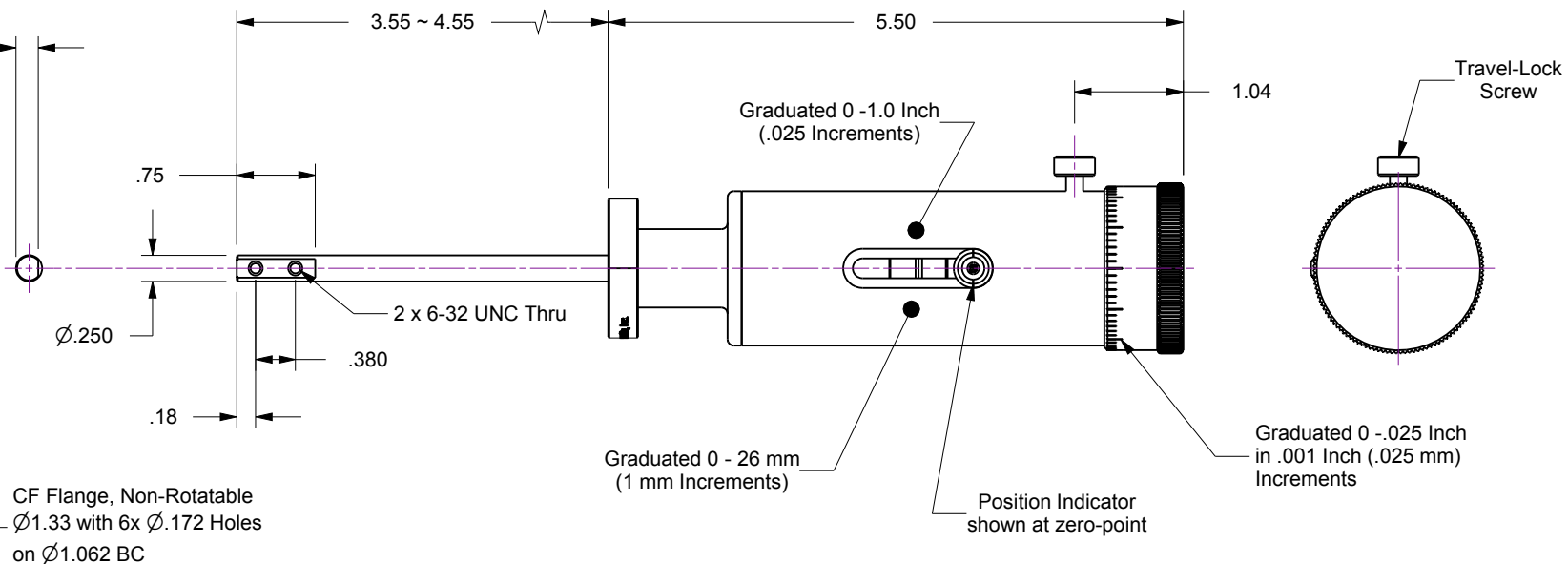
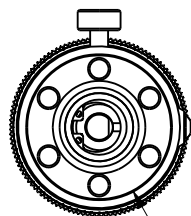
Rev.	Description	Date	Made By	Approval
B	Remodeled	3/8/2019	AL	



Vacuum Side
Materials are
Stainless Steel

Air Side Materials
are Stainless Steel and
Black Anodized Aluminium

Shaft
End-View Detail
.213 to Flat



Accu-Glass Products Inc.
25047 Anza Drive
Valencia, CA 91355
T 818-365-4215
F 818-365-7074
www.accuglassproducts.com

UNCONTROLLED WEB DRAWING

Proprietary and Confidential
The information contained in this drawing is the sole property of Accu-Glass, Products Inc. Any reproduction, in part or as whole, without the written permission of Accu-Glass Products, Inc., is strictly prohibited.

Material
See Individual Components

Tolerances,
unless otherwise specified

.X ± .030	Angles ± 0.5°
.XX ± .010	Finish 63Ra
.XXX ± .005	

Title

HTL-133-1

Drawn by
Date

Ligeti
3/8/2010

No. **102200**

Rev.

B

Approved

Sheet