

1

2

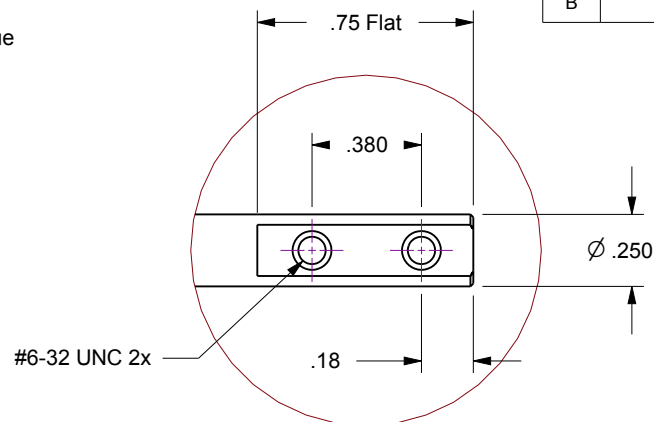
3

4

Notes

1. HTL-133-1, 1-Inch linear travel feedthrough with Option-21, 126 oz-in torque Geared 10 RPM AC motor
2. Leak test to 5x10E-10 Standard cc/sec of He
3. Protect flange seal surface (knife-edge) from damage

Rev.	Description	Date	Made By	Approval
B	Remodeled	3/21/2019	AL	

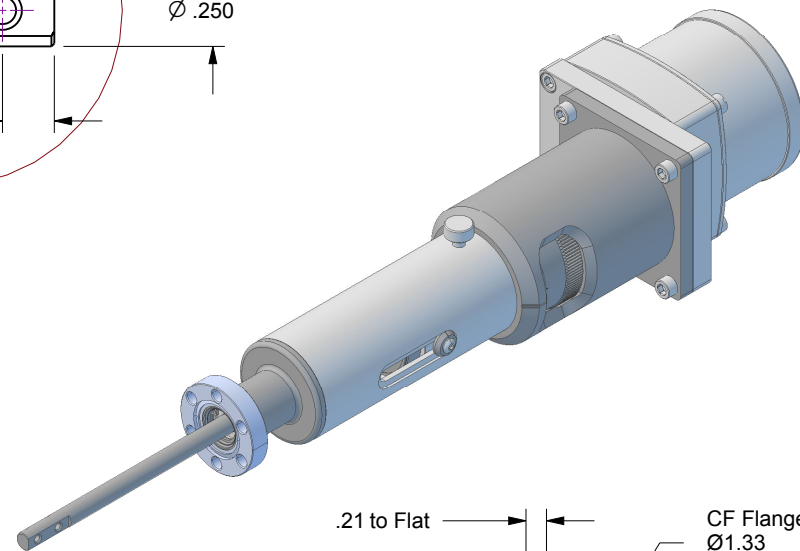


Detail C

9.0
4x 22AWG
Motor Leads

Ø1.99

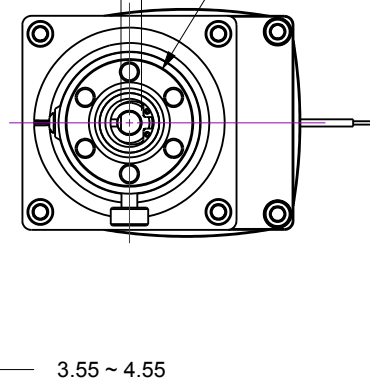
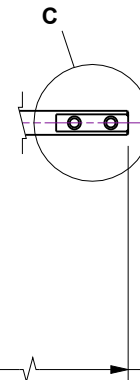
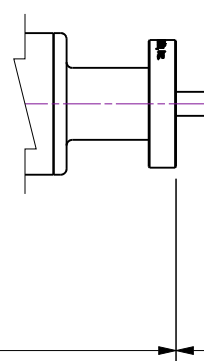
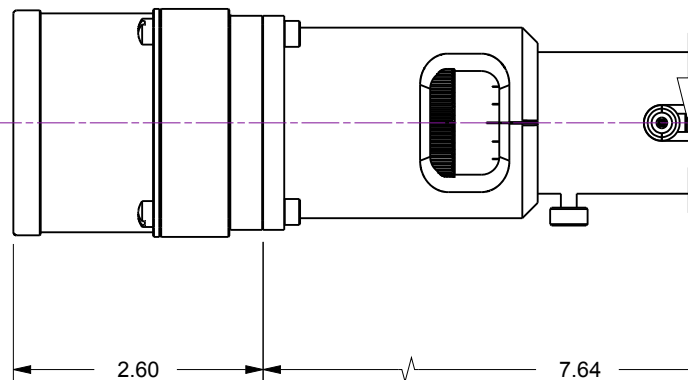
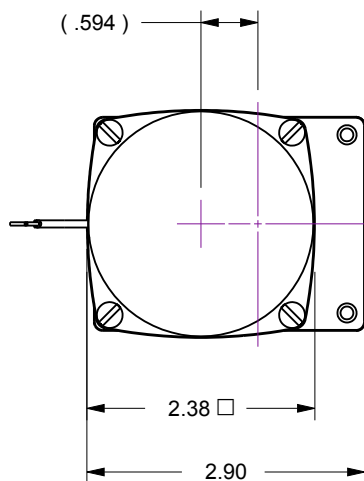
Ø 1.48



.21 to Flat

CF Flange
Ø1.33

(.594)



UNCONTROLLED WEB DRAWING

Proprietary and Confidential
The information contained in this drawing is the sole property of Accu-Glass, Products Inc. Any reproduction, in part or as whole, without the written permission of Accu-Glass Products, Inc., is strictly prohibited.

Material
See Individual Components

Tolerances,
unless otherwise specified

.X ± .030
.XX ± .010
.XXX ± .005

Angles ± 0.5°
Finish 63Ra

Title

HTL-133-1-21

Drawn by
Date

Ligeti
3/21/2019

No.

102200.21

Rev.

B

Approved

Sheet



Accu-Glass Products Inc.
25047 Anza Drive
Valencia, CA 91355
T 818-365-4215
F 818-365-7074
www.accuglassproducts.com