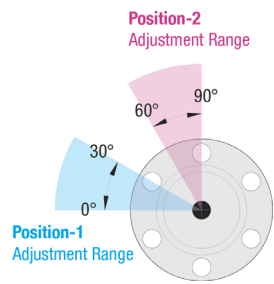


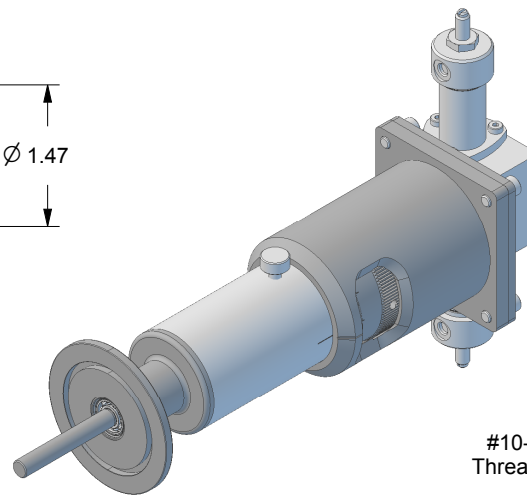
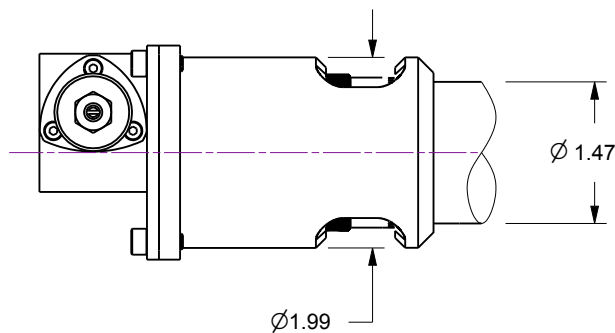
Notes

1. HTR-K40-31... 360-Degree Rotary Feedthrough w/Option-31, Pneumatic Actuator w/150 PSI Solenoid Valve, 90-Degree rotation w/30-Degree adjustable both ends
2. Welded bellows-sealed air-to-vacuum interface
3. Leak test to 5×10^{-10} Standard cc/sec of He
4. Maximum Load : 6lb Axial, 10lb Lateral, 250 oz-in Torque
5. Resolution : Rotary scale 5-Degrees
6. Optional 'Speed Control Valve' kit part number 112687 (sold separately)

Rev.	Description	Date	Made By	Approval
B	Remodeled	4/22/2019	AL	



Angle adjustment screw and lock-nut 2x



112687
(sold separately)

6

#10-32 UNF
Threaded Ports
2x

5.50 max.

Ø.250

ISO NW40 KF
Ø2.16 Flange

4.12

Ø.81

2.23

.42

1.25

6.27

1.62



Accu-Glass Products Inc.
25047 Anza Drive
Valencia, CA 91355
T 818-365-4215
F 818-365-7074
www.accuglassproducts.com

UNCONTROLLED WEB DRAWING

Proprietary and Confidential
The information contained in this drawing is the sole property of Accu-Glass, Products Inc. Any reproduction, in part or as whole, without the written permission of Accu-Glass Products, Inc., is strictly prohibited.

Material
See Individual Components

Tolerances,
unless otherwise specified

.X ± .030

.XX ± .010

.XXX ± .005

Angles ± 0.5°
Finish 63Ra

Title

HTR-K40-31

Drawn by
Date

Ligeti
4/18/2019

No. **102150.31**

Rev.

B

Approved

Sheet