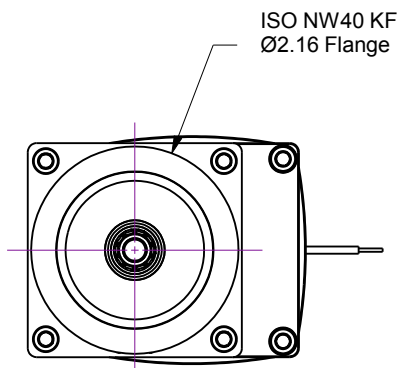
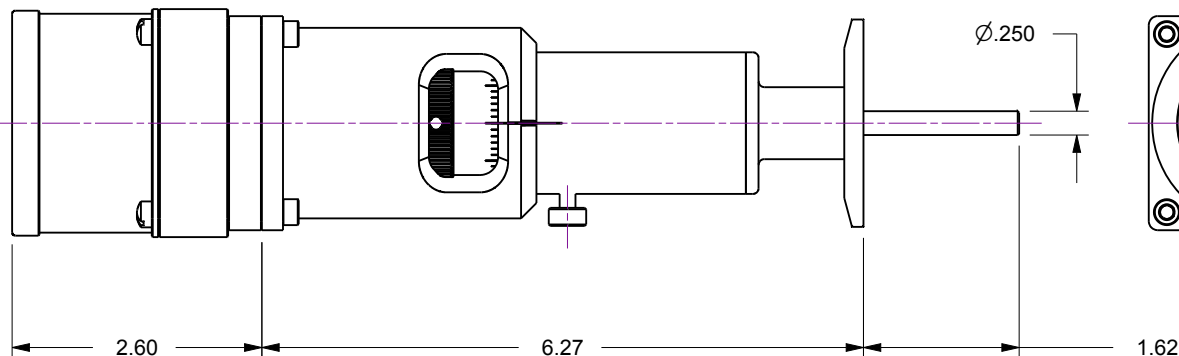
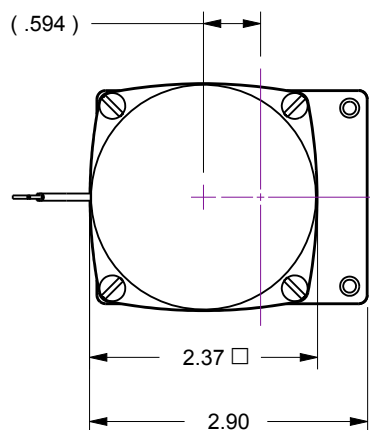
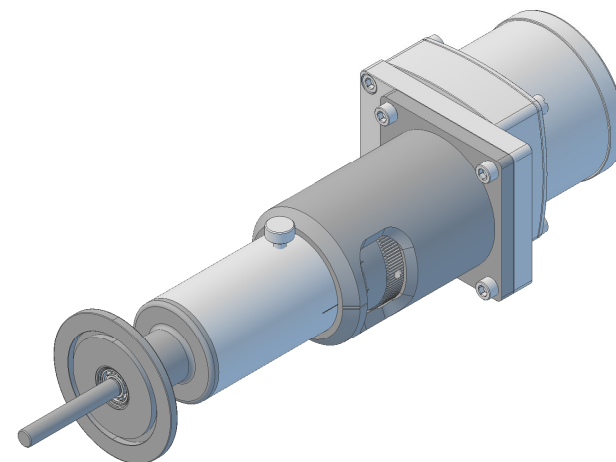
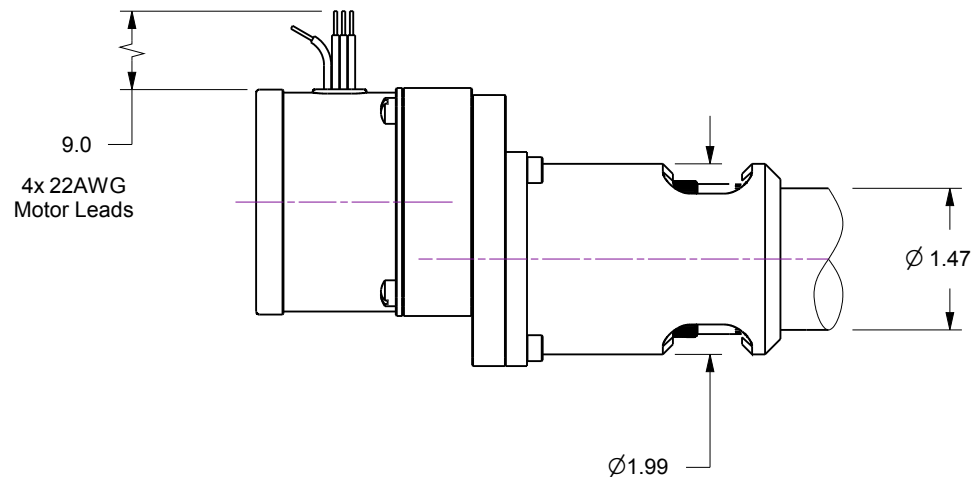


Notes

1. HTR-K40-21... 360-Degree Rotary Feedthrough w/Option-21, Motorized Actuator
126 oz-in Torque, 10-RPM, Geared AC Motor
2. Welded bellows-sealed air-to-vacuum interface
3. Leak test to 5x10E-10 Standard cc/sec of He
4. Maximum Load : 6lb Axial, 10lb Lateral, 250 oz-in Torque, 1,000 RPM
5. Resolution : Rotary scale 5-Degrees

Rev.	Description	Date	Made By	Approval
B	Remodeled	4/22/2019	AL	

**UNCONTROLLED WEB DRAWING**

Proprietary and Confidential
The information contained in this drawing is the sole property of Accu-Glass, Products Inc. Any reproduction, in part or as whole, without the written permission of Accu-Glass Products, Inc., is strictly prohibited.

Material
See Individual Components

Tolerances,
unless otherwise specified

.X ± .030
.XX ± .010
.XXX ± .005

Angles ± 0.5°
Finish 63Ra

Title

HTR-K40-21

Drawn by
Date

Ligeti
4/18/2019

No. **102150.21**

Rev.

B

Approved

Sheet



Accu-Glass Products Inc.
25047 Anza Drive
Valencia, CA 91355
T 818-365-4215
F 818-365-7074
www.accuglassproducts.com