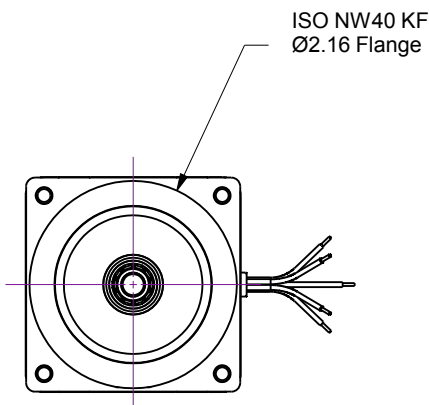
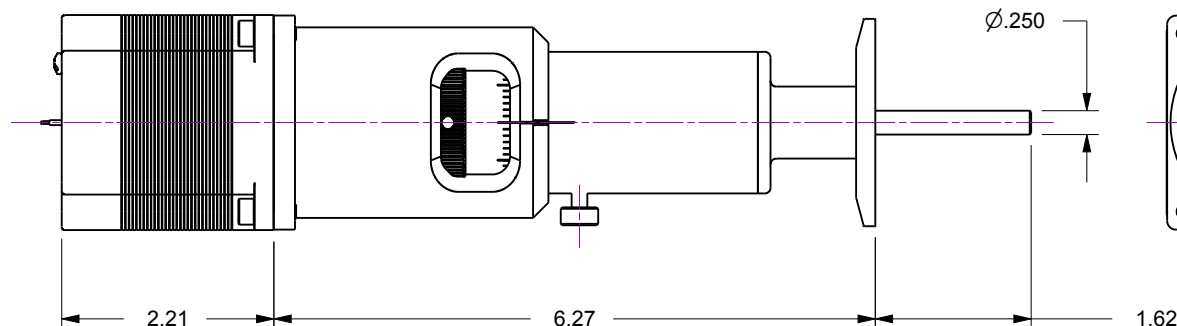
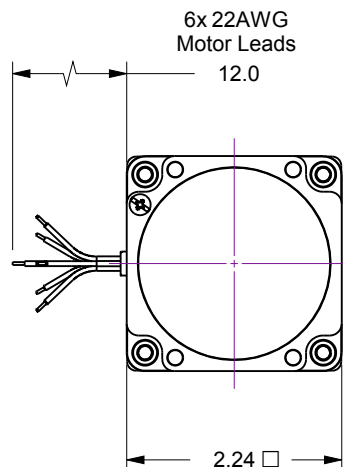
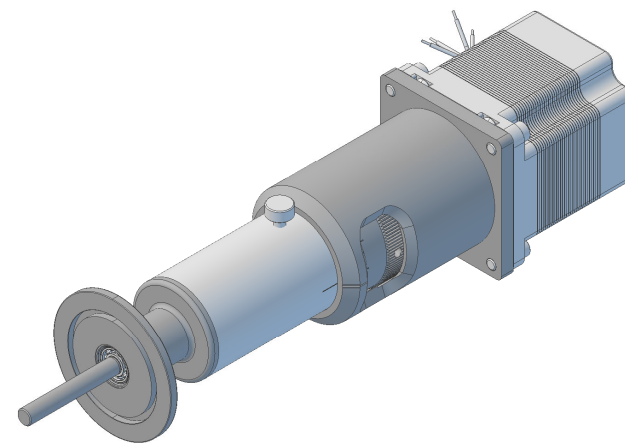
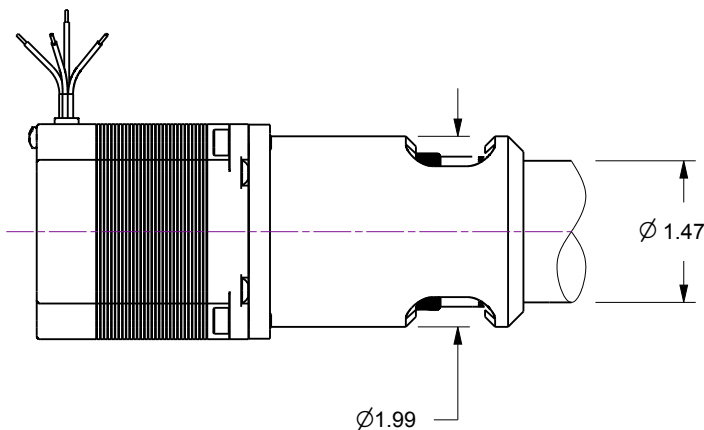


Notes

1. HTR-K40-12... 360-Degree Rotary Feedthrough w/Option-12, Motorized Actuator
170 oz-in Torque, 200 full-step resolution DC Stepper Motor
2. Welded bellows-sealed air-to-vacuum interface
3. Leak test to 5x10E-10 Standard cc/sec of He
4. Maximum Load : 6lb Axial, 10lb Lateral, 250 oz-in Torque, 1,000 RPM
5. Resolution : Rotary scale 5-Degrees

| Rev. | Description | Date | Made By | Approval |
|------|-------------|-----------|---------|----------|
| B | Remodeled | 4/22/2019 | AL | |



Accu-Glass Products Inc.
25047 Anza Drive
Valencia, CA 91355
T 818-365-4215
F 818-365-7074
www.accuglassproducts.com

UNCONTROLLED WEB DRAWING

Proprietary and Confidential
The information contained in this drawing is the sole property of Accu-Glass, Products Inc. Any reproduction, in part or as whole, without the written permission of Accu-Glass Products, Inc., is strictly prohibited.

Material
See Individual Components

Tolerances,
unless otherwise specified

| | |
|-------------|------------------------------|
| .X ± .030 | Angles ± 0.5° Finish 63Ra |
| .XX ± .010 | |
| .XXX ± .005 | |

Title

HTR-K40 -12

Drawn by
Date

Ligeti
4/18/2019

No.

102150.12

Rev.

B

Approved

Sheet