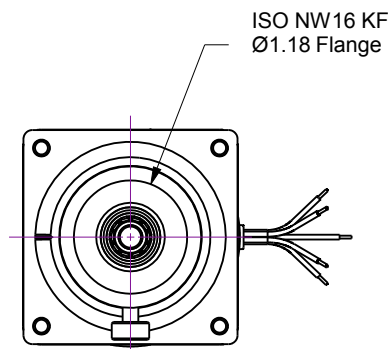
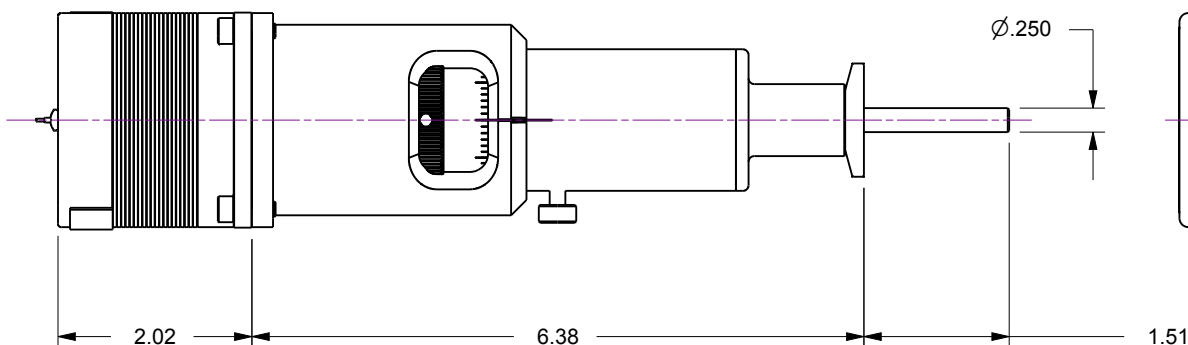
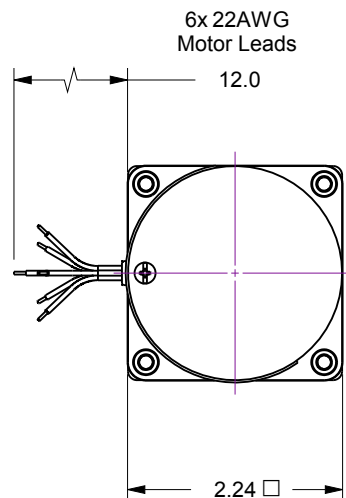
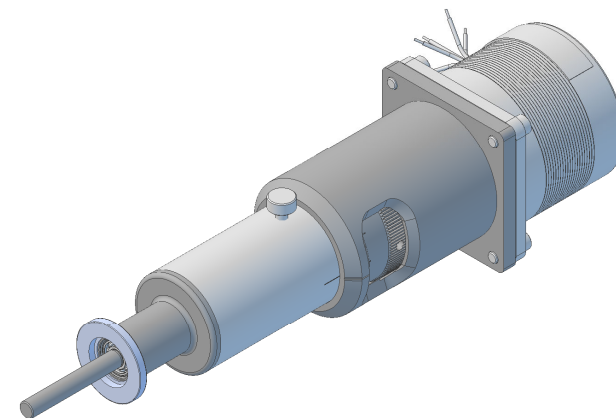
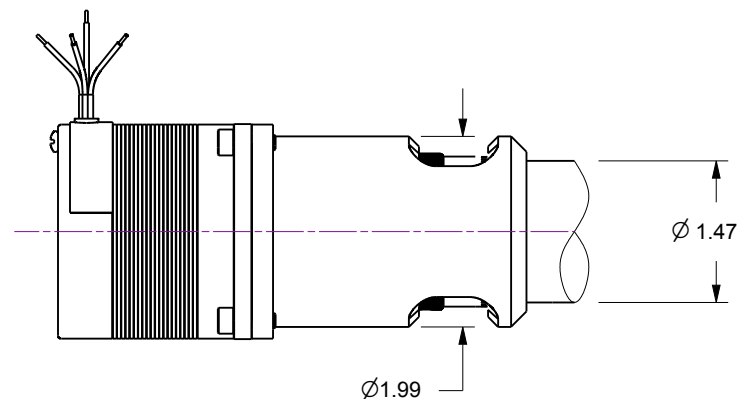


## Notes

1. HTR-K16-11... 360-Degree Rotary Feedthrough w/Option-11, Motorized Actuator  
75 oz-in Torque, 200 full-step resolution DC Stepper Motor
2. Welded bellows sealead air-to-vacuum interface
3. Leak test to 5x10E-10 Standard cc/sec of He
4. Maximum Load : 6lb Axial, 10lb Lateral, 250 oz-in Torque
5. Resolution : Rotary scale is 5-Degrees

Rev.	Description	Date	Made By	Approval
B	Remodeled	4/18/2019	AL	

**UNCONTROLLED WEB DRAWING**

Proprietary and Confidential  
The information contained in this drawing is the sole property of Accu-Glass, Products Inc. Any reproduction, in part or as whole, without the written permission of Accu-Glass Products, Inc., is strictly prohibited.

Material  
See Individual Components

Tolerances,  
unless otherwise specified

.X ± .030  
.XX ± .010  
.XXX ± .005

Angles ± 0.5°  
Finish 63Ra

Title

HTR-K16 -11

Drawn by  
Date

Ligeti  
4/18/2019

No.

102140.11

Rev.

B

Approved

Sheet



**Accu-Glass Products Inc.**  
25047 Anza Drive  
Valencia, CA 91355  
T 818-365-4215  
F 818-365-7074  
www.accuglassproducts.com