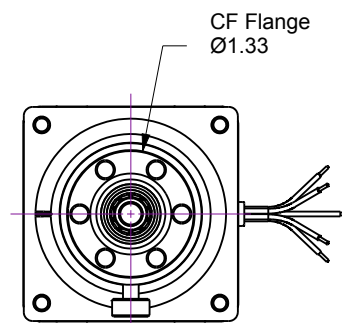
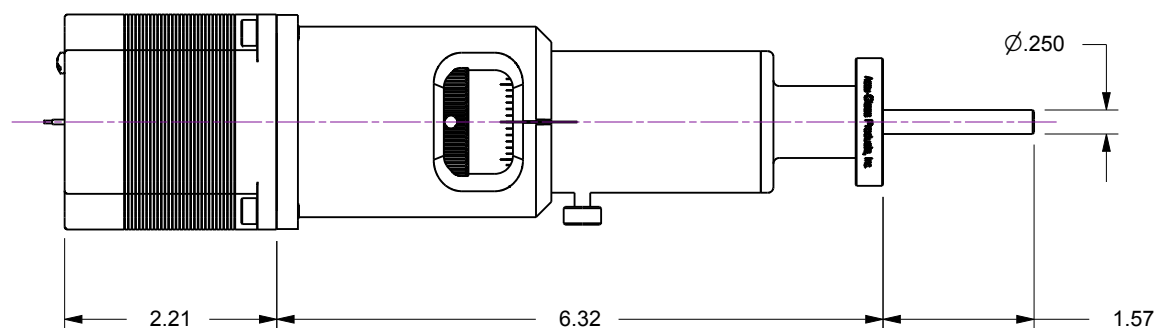
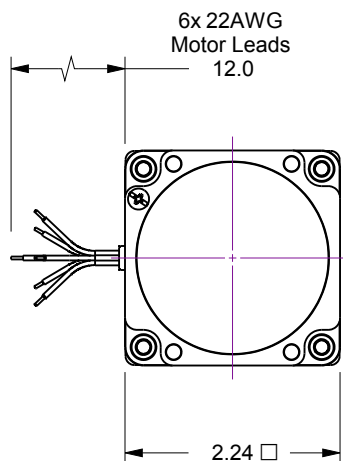
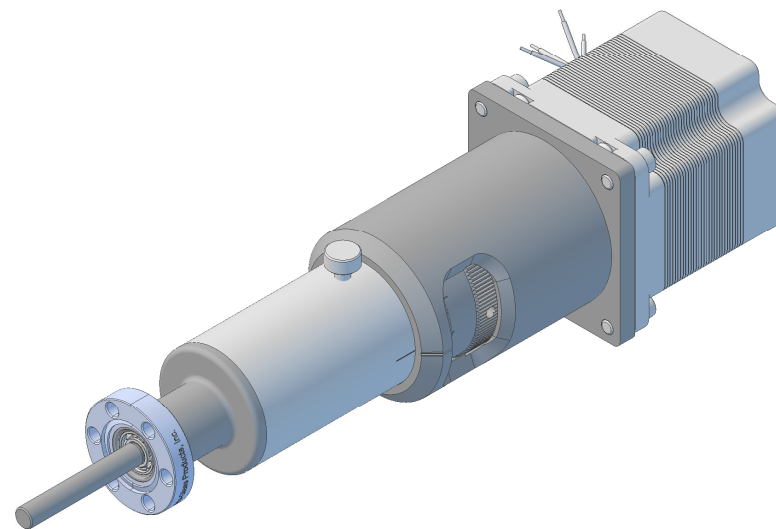
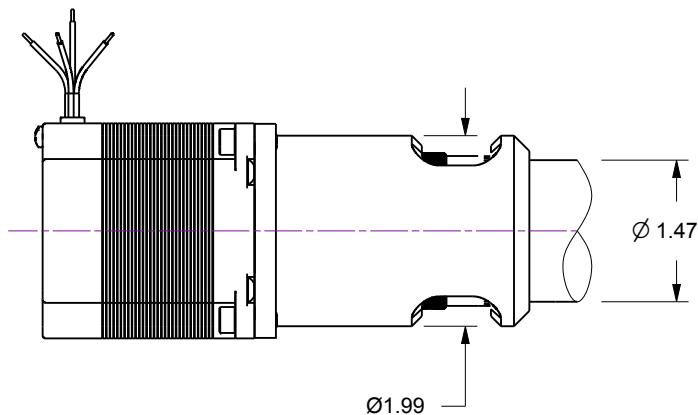


Notes

1. HTR-133-12... 360-Degree Rotary Feedthrough w/Option-12, Motorized Actuator
170 oz-in Torque, 200 full-step resolution DC Stepper Motor
2. Welded bellows sealed air-to-vacuum interface
3. Leak test to 5×10^{-10} Standard cc/sec of He
4. Maximum Load : 6lb Axial, 10lb Lateral, 250 oz-in Torque, 1,000 RPM
5. Resolution : Rotary scale / 5-Degrees

Rev.	Description	Date	Made By	Approval
B	Remodeled	4/15/2019	AL	



Accu-Glass Products Inc.
25047 Anza Drive
Valencia, CA 91355
T 818-365-4215
F 818-365-7074
www.accuglassproducts.com

UNCONTROLLED WEB DRAWING

Proprietary and Confidential
The information contained in this drawing is the sole property of Accu-Glass, Products Inc. Any reproduction, in part or as whole, without the written permission of Accu-Glass Products, Inc., is strictly prohibited.

Material
See Individual Components

Tolerances,
unless otherwise specified

.X ± .030	Angles ± 0.5° Finish 63Ra
.XX ± .010	
.XXX ± .005	

Title

HTR-133-12

Drawn by
Date

Ligeti
4/15/2019

No. **102100.12**

Rev.
B

Approved

Sheet