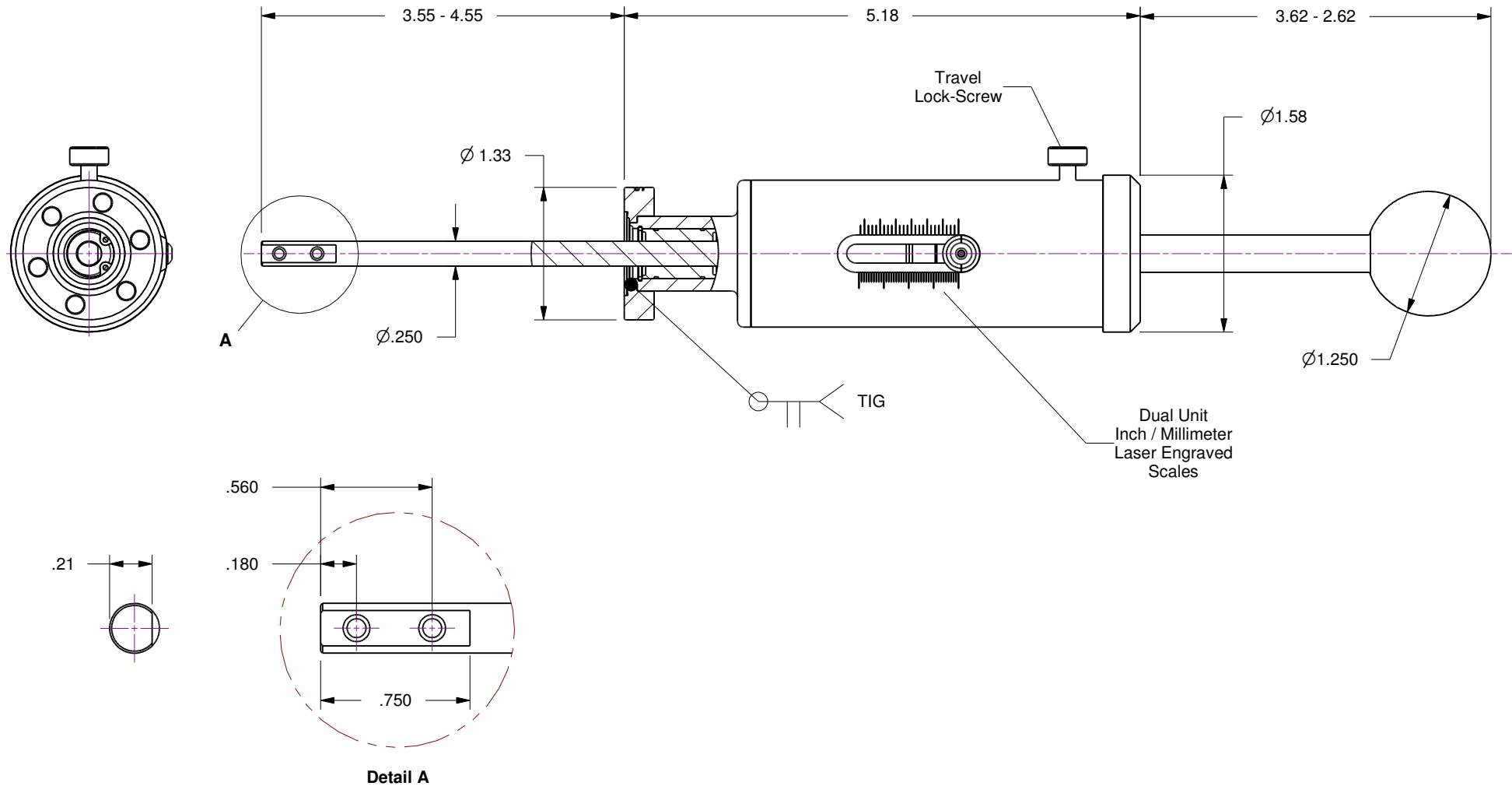


Notes

1. 1 Inch, Manual linear travel
2. Leak test to 5x10E-10 Standard cc/sec of He.
3. Protect flange seal surface from damage.
4. Black anodized aluminum body.
5. Resolution : .025 Inch Scale / 1mm Metric Scale

Rev	Description	Date
A		



Accu-Glass Products Inc.
25047 Anza Drive
Valencia, CA 91355
T 818-365-4215
F 818-365-7074
www.accuglassproducts.com

UNCONTROLLED WEB DRAWING

Proprietary and Confidential
The information contained in this drawing is the sole property of Accu-Glass, Products Inc. Any reproduction, in part or as whole, without the written permission of Accu-Glass Products, Inc., is strictly prohibited.

Material
See Individual Components

Tolerances,
unless otherwise specified

.X ± .030	Angles ± 0.5° Finish 63Ra
.XX ± .010	
.XXX ± .005	

Title

PHTL-133-1

Drawn by
Date

Ligeti
10/22/2013

No. **112050**

Rev.
A

Approved

Sheet