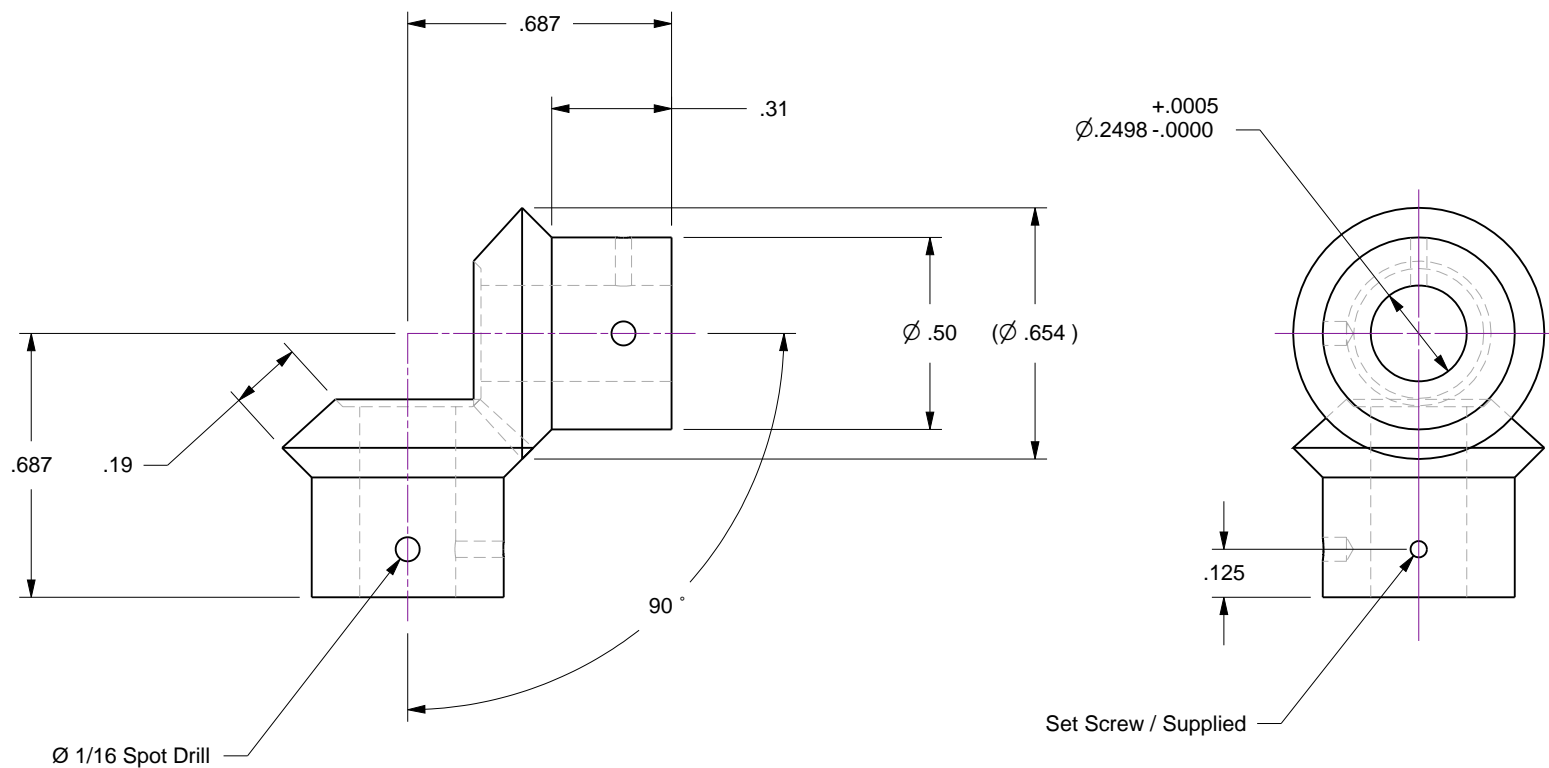


## Notes

1. Miter + Bevel gear set are a matched pair, and should always be used together.
2. Pressure angle: 20 degrees
3. Diametral Pitch: 48
4. Pitch Diameter: .625 Inch
5. Gear Ratio: 1:1
6. Number of Teeth: 30 (each gear)

Rev	Description	Date
A	Initial Release	



**Accu-Glass Products Inc.**  
 25047 Anza Drive  
 Valencia, CA 91355  
 T 818-365-4215  
 F 818-365-7074  
 www.accuglassproducts.com

**UNCONTROLLED WEB DRAWING**

Proprietary and Confidential  
 The information contained in this drawing is the sole property of Accu-Glass, Products Inc. Any reproduction, in part or as whole, without the written permission of Accu-Glass Products, Inc., is strictly prohibited.

Material 303 Stainless Steel	
Tolerances, unless otherwise specified	
.X ± .030	Angles ± 0.5°
.XX ± .010	Finish 63Ra
.XXX ± .005	

Title <b>Miter+Bevel Gear Set</b>				
Drawn by Date	Ligeti 3/18/2014	No.	<b>112014</b>	Rev. <b>A</b>
Approved				Sheet