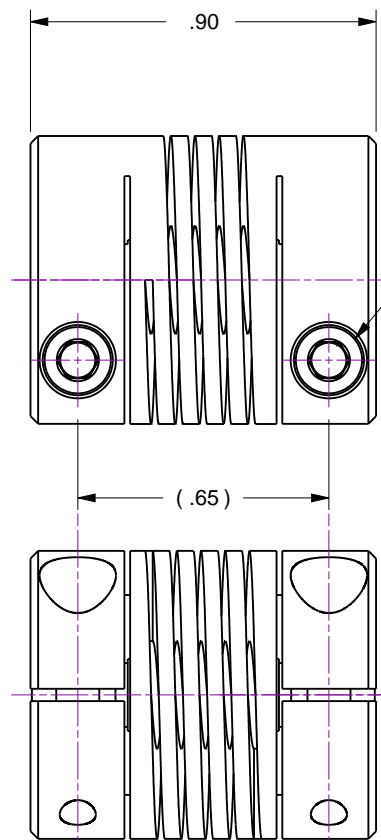


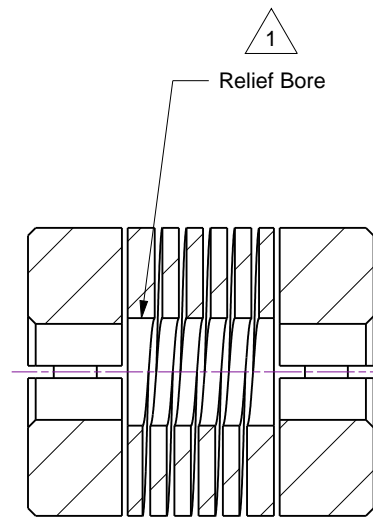
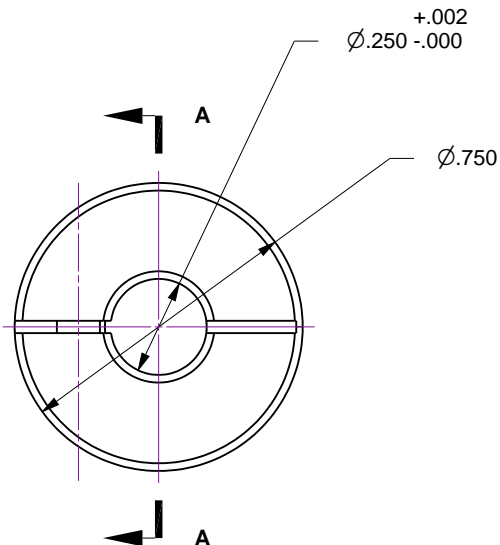
## Notes

1. Central relief permits component shafts to near butt.
2. End hubs and helical flexure made from single piece of material
3. Permitted axial motion is  $\pm .010$  (from free length).
4. Zero backlash, and no lubrication required
5. 10,000 RPM depending on application
6. Working torque rating is based on continuous duty with specified misalignments applied separately, and may be increased with improved alignment... Non-Reversing: 8 lb-in, Shock or Reversing: 4 lb-in, and Momentary: 17 lb-in
7. Allowable shaft misalignment... Angular : up to 5 Degrees, Offset : up to .010 (or .020 TIR)

Rev	Description	Date
A	Initial Release	



Includes 2x 4-40 UNC  
Socket-Head Cap Screws



Section A-A



**Accu-Glass Products Inc.**  
25047 Anza Drive  
Valencia, CA 91355  
T 818-365-4215  
F 818-365-7074  
www.accuglassproducts.com

### UNCONTROLLED WEB DRAWING

Proprietary and Confidential  
The information contained in this drawing is the sole property of Accu-Glass, Products Inc. Any reproduction, in part or as whole, without the written permission of Accu-Glass Products, Inc., is strictly prohibited.

Material Stainless Steel, 17-4PH	
Tolerances, unless otherwise specified	
.X $\pm .030$	Angles $\pm 0.5^\circ$
.XX $\pm .010$	Finish 63Ra
.XXX $\pm .005$	

Title Coupling, .250 Shaft, Helical Flex			
Drawn by Date	Ligeti 3/10/2015	No. <b>112009</b>	Rev. <b>A</b>
Approved			Sheet