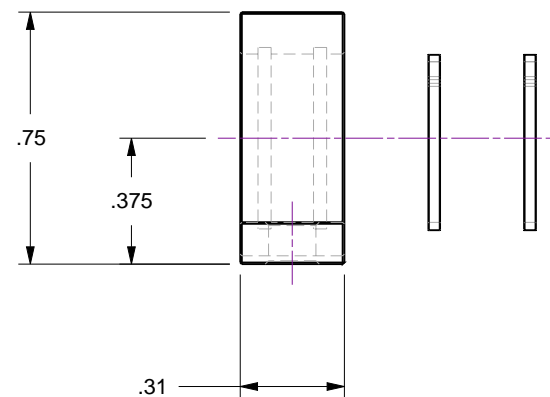
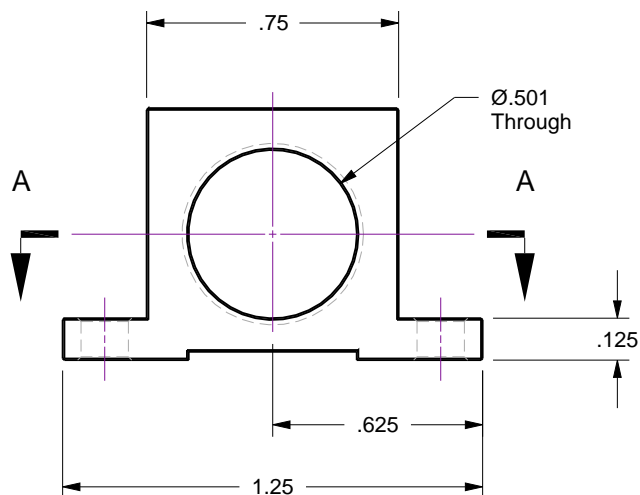
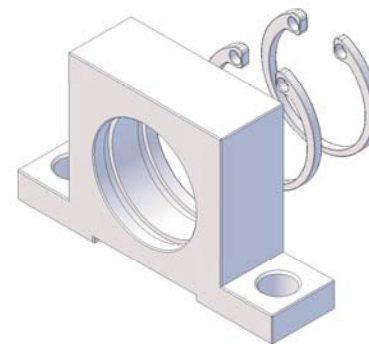
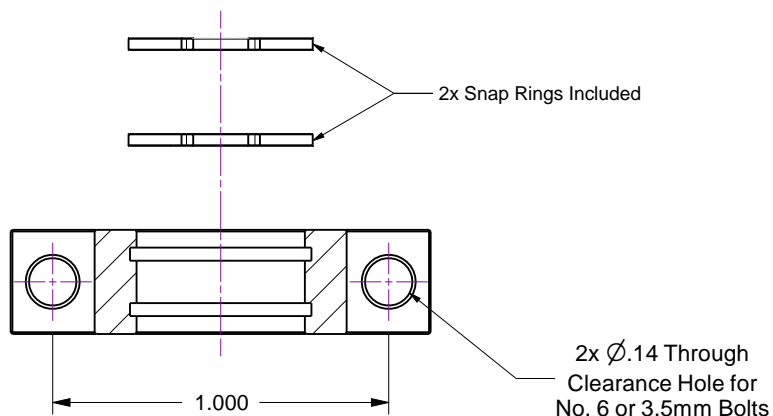


## Notes

1. Assembly is supplied with two (2) snap rings as shown
2. Use with  $\varnothing.250$  shaft radial bearing, AG part No. 112004, Model No. R-BB-250

Rev	Description	Date
B	Remodeled / Redrwan	

## Section A-A



**Accu-Glass Products Inc.**  
 25047 Anza Drive  
 Valencia, CA 91355  
 T 818-365-4215  
 F 818-365-7074  
 www.accuglassproducts.com

**UNCONTROLLED WEB DRAWING**

Proprietary and Confidential  
 The information contained in this drawing is the sole property of Accu-Glass, Products Inc. Any reproduction, in part or as whole, without the written permission of Accu-Glass Products, Inc., is strictly prohibited.

Material  
 See Individual Components

Tolerances,  
 unless otherwise specified

.X  $\pm$  .030  
 .XX  $\pm$  .010  
 .XXX  $\pm$  .005

Angles  $\pm$  0.5°  
 Finish 63Ra

Title

Radial Bearing Mount

Drawn by  
 Date

Ligeti  
 5/28/2014

No. **112002**

Rev.  
**B**

Approved

Sheet