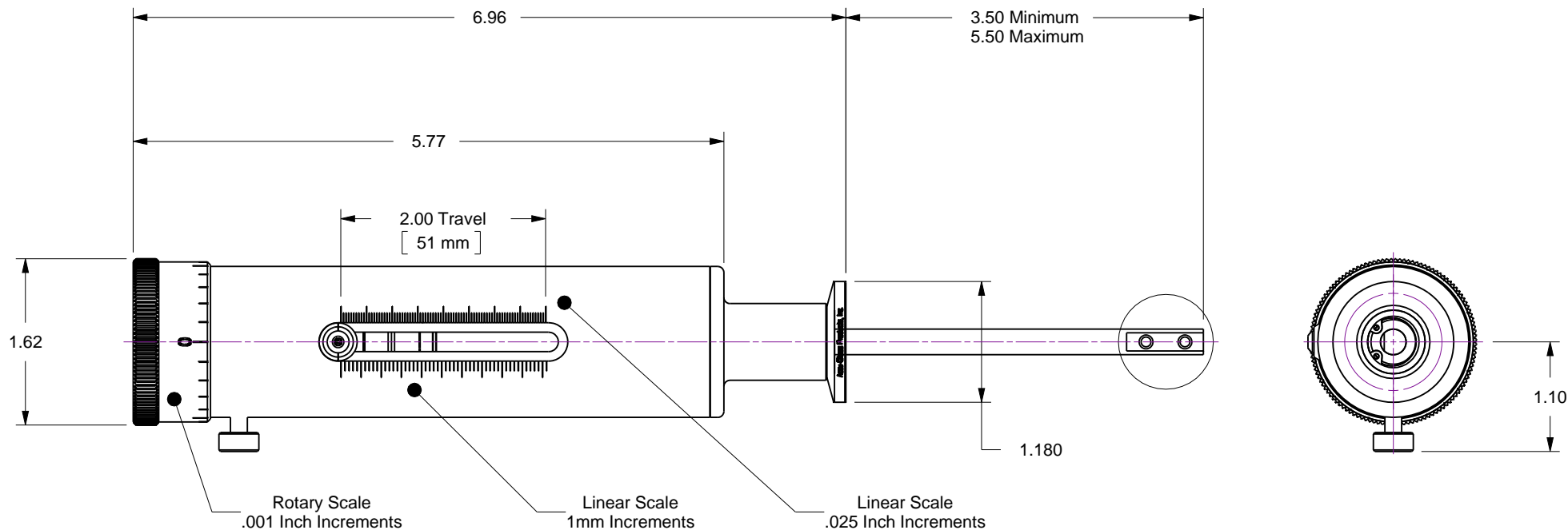
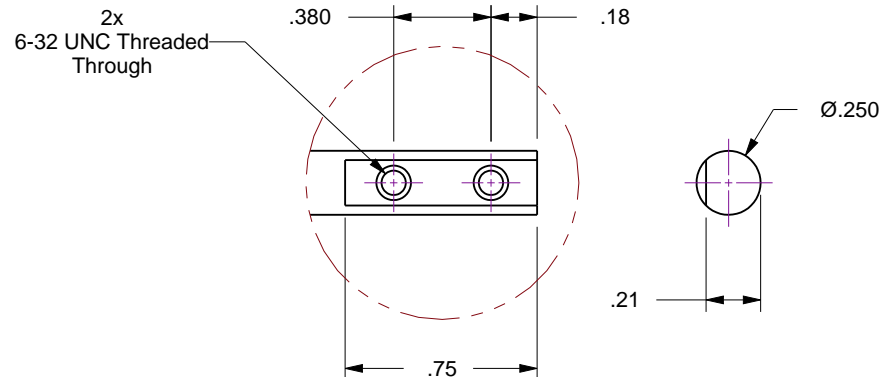


## Notes

1. Leak test to 5x10E-10 Standard cc/sec of He
2. Environmental rating is limited to that of ISO NW flange... 1x10E-8 Torr, and 150 C
3. Axial load is 5 lb maximum... Lateral (moment) load is 5 lb at 2 inch from flange face.
4. Linear / Rotary scale resolutions are .025 / .001 Inch respectively

Rev	Description	Date
A	Initial Release	

**UNCONTROLLED WEB DRAWING**

Proprietary and Confidential  
The information contained in this drawing is the sole property of Accu-Glass, Products Inc. Any reproduction, in part or as whole, without the written permission of Accu-Glass Products, Inc., is strictly prohibited.

Material  
See Individual Components

Tolerances,  
unless otherwise specified

.X ± .030	Angles ± 0.5° Finish 63Ra
.XX ± .010	
.XXX ± .005	

Title

Linear Feedthrough, 2 Inch Manual on ISO NW16

Drawn by	Ligeti	No.	Rev.
Date	8/27/2014	102260	A
Approved			Sheet



**Accu-Glass Products Inc.**  
25047 Anza Drive  
Valencia, CA 91355  
T 818-365-4215  
F 818-365-7074  
www.accuglassproducts.com