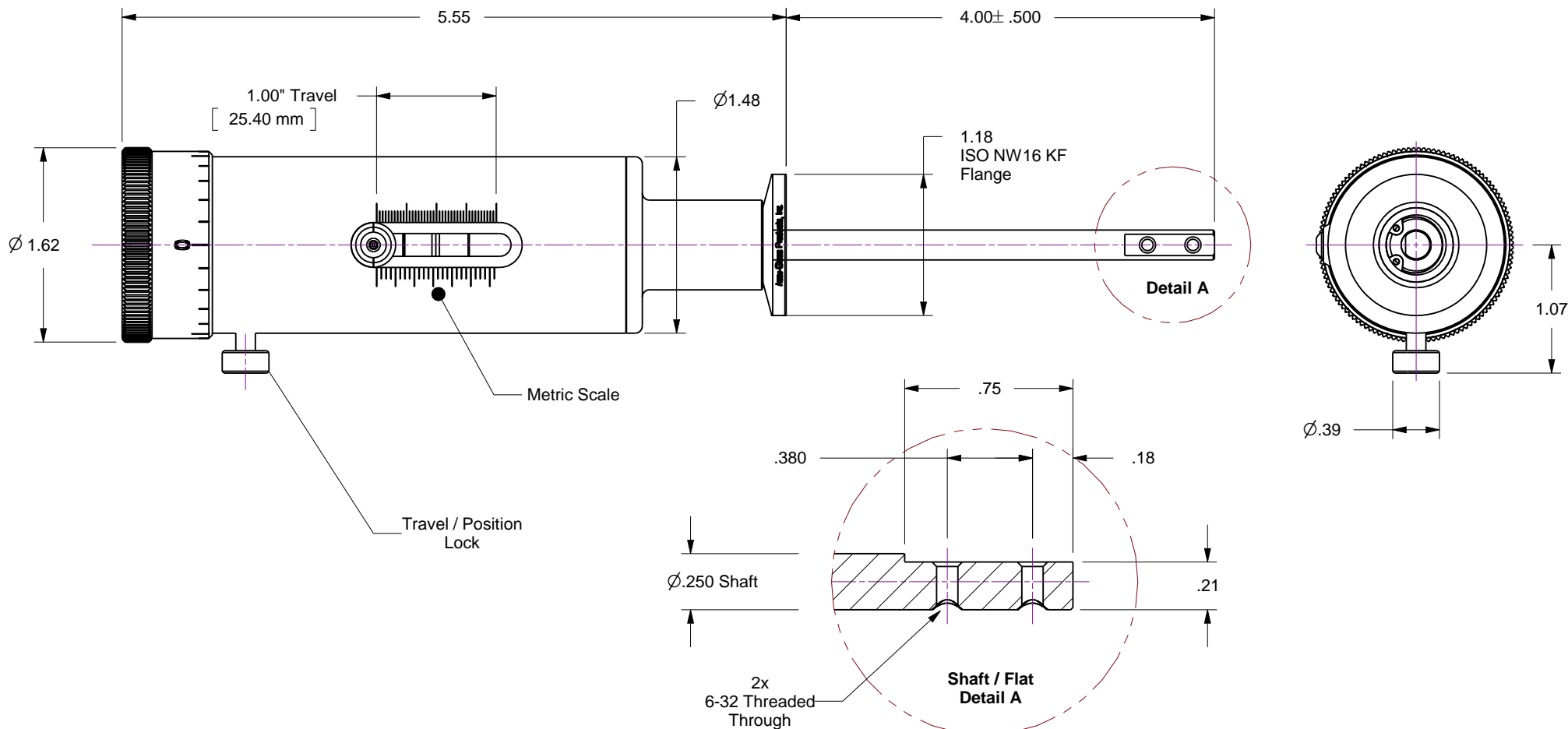


## Notes

1. Leak test to 5x10E-10 Standard cc/sec of He
2. Environmental rating is limited to that of ISO NW flange... 1x10E-8 Torr, and 150C
3. Axial load is 5 lb. maximum... Lateral (moment) load is 5 lb maximum at 2 inch from flange face.
4. Linear / Rotary scale resolutions are .025 / .001 Inch respectively

Rev	Description	Date
A	Initial Release	



**Accu-Glass Products Inc.**  
 25047 Anza Drive  
 Valencia, CA 91355  
 T 818-365-4215  
 F 818-365-7074  
 www.accuglassproducts.com

### UNCONTROLLED WEB DRAWING

Proprietary and Confidential  
 The information contained in this drawing is the sole property of Accu-Glass, Products Inc. Any reproduction, in part or as whole, without the written permission of Accu-Glass Products, Inc., is strictly prohibited.

Material  
 See Individual Components

Tolerances,  
 unless otherwise specified

.X ± .030	Angles ± 0.5° Finish 63Ra
.XX ± .010	
.XXX ± .005	

Title

**Linear Feedthrough, 1 Inch Manual on ISO NW16 KF**

Drawn by	Ligeti	No.	Rev.
Date	8/25/2014	<b>102250</b>	<b>A</b>
Approved			Sheet